



INDUSTRIAL EQUIPMENT AUCTIONEERS

ACCEPTING CONSIGNMENTS

for the 37th annual Air Works Consignment Auction!

Thursday, Feb. 13th 2025 at 9:00 AM

Friday, Feb. 14th 2025 at 8:30 AM

Saturday, Feb. 15th 2025 at 8:30 AM

Consign Today to take Advantage of Early Advertising!

Deadline for early advertising is January 1, 2025



Mt. Hope Auction Grounds, Mt. Hope, OH | Auction & Showcase Location (GPS) 8076 SR 241, Millersburg, OH 44654

2024 AIR WORKS AUCTION RESULTS



Mt. Hope SHOWCASE

Make plans to attend the 2025 Mt. Hope Showcase held alongside the auction!

To advertise in the Showcase Catalog call: 330-749-4362

Thursday, Feb. 13th
Friday, Feb. 14th
Saturday, Feb. 15th, 2025

TURN YOUR EXCESS EQUIPMENT INTO CASH! - CONSIGN TODAY!

NOTICE!

SALE ORDER

Heavy Equip./Rolling Stock Sat., Feb 15

Woodworking Equipment Fri., Feb 14

Metalworking Equipment Sat., Feb 15

2025 CHANGES

Sawmill & Pallet Equipment

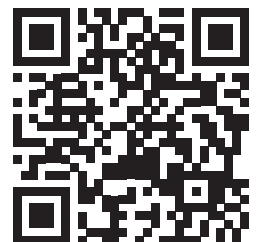
THURSDAY, Feb 13 (NEW)

Power Units & Compressors

THURSDAY, Feb 13 (NEW)

SPECIALIZING IN LIQUIDATIONS

SEE MORE AT
AirWorksAuction.com



airworksauuction.com · 330.845.8485
sales@airworksauuction.com · P.O. Box 242 Kidron, OH 44636

IMPORT EQUIPMENT & TOOL ONLINE-ONLY AUCTION

291 Kurzen rd. Dalton, OH 44618

TUESDAY
OCTOBER 29, 2024
STARTS CLOSING 6:00 PM EST

Multiple Container Loads of Import Equipment Auction.
Excellent Equipment for Property Owners and Small Projects.

Multiple containers of import equipment & tools, Industrial cantilever shelving, tools, Mini Excavators - Mini Skid Loaders - Mini wheel loaders - Attachments and more.

New CTN 1 Trip 40' High Cube Multi Door Shipping Container; New Unused MIVA Model VA15 Mini Excavator, 16" Digging Bucket, Aux. Hydraulics, Dozer Blade; 4 = New Unused EGN Model EG360T Skid Loader with 40" Bucket, Aux. Hydraulics, Rubber Tracks, Elec. Start; New Unused Fland Model FL45 Wheel Loader with Bucket, LED Lights; New Unused Traner Model EL45 Electric Wheel Loader with Bucket, LED Lights, Sells with Chargers; New Unused GIYI Model GY_72 Pro Forestry Mulcher Skid Loader Attachment; New Unused GIYI Model THJ72 Mulcher Skid Loader Attachment; New Unused SKLP Model SK140 Rotary Tiller, 3 Point Hitch; New Unused GIYI Model 680 Post Driver Skid Loader Attachment; 3 = New Unused Fens Model FEN20 Galvanized Steel Fence; 4 = New Unused GIYI Hydraulic Auger Skid Loader Attachment with 3 Auger Bits; New Unused MIVA 40" Tilting Mini Excavator Bucket; New Unused MIVA 32" Tilting Mini Excavator Bucket; New Unused MIVA 24" Tilting Mini Excavator Bucket; 2 = New Unused SKLP 10' Fork Extensions; 4 = New Unused SKLP 7' Fork Extensions; New Unused MECO Model M-F Electric Vehicle, 60 Volt, 4 Door, LED Lights and Turn Signal, Has Damage
7 = Heavy Duty Cantilever Rack; Metal Work Bench With Vise and Double End Bench Grinder; Central Forge 10 Piece Pipe Threading Kit, Die Sizes From 3/8" to 2"; Box Lot, Tap and Die Set, 2 Lawson Hydraulic Installation Tools; 3 = Dewalt 20 Volt Max Drill/Driver Set With Charger and 2 Batteries; 2 Vises; Box Lot 3 Air Tools, Dewalt Finish Stapler, Hitachi Stapler, Surfbounder 9610 Stapler; Box Lot 3 Air Tools, Senco Model SLS18 Brad Nailer, 2 Porter Cable Model NS150A Narrow Crown Stapler; JET model 1SBT Hoist Trolley 1 Ton Capacity; Box Lot, 3 Power Tools, Dynabrade Air Sander, Porter Cable Electric Sander, Dewalt Compact Router; Box Lot, 2 Makita Routers, Models RP1800 and RT0701C; 2 Porter Cable Electric Routers, Models 7301 and 690LR; Box Lot, 2 Makita Electric Routers, Models 3612 and RT0701C; 2 = Hitachi Model C7SB2 Circular Saw 7 1/4"; 2 Husky 20 Ton Bottle Jacks 2 Bottle Jacks, Pittsburgh 20 Ton, Husky Unknown; Wen Model DF452IX 4500-Watt Dual Fuel Inverter Generator, Surplus Condition Unknown; Wen Model DC1300 Industrial Dust Collector, Surplus Condition Unknown; Wen Model PL1326 - 13" Spiral Cutter Head Planer, Surplus Condition Unknown; Wen Model 3417 Heavy Duty Air Filtration System, Surplus Condition Unknown; Wen Model JT833H 8" Spiral Cutter Head Jointer, Surplus Condition Unknown; Wen Model MSA330 Miter Saw Stand, Surplus Condition Unknown; GayLord Bin Full Of Surplus Items As Is, Bench Griner, Paint Sprayer, Air Matterses, Ceiling Fan; GayLord Bin Full Of Surplus Items As Is, Bed Frame, Hoover Hockey Game; 6 Color Your Own Cabin Kits; 2 = 8 Color Own Cabin Kits, 1 Case Of 8; Box Lot, 23 Bags Stomp Rockets; 174 Water Bottles, 29 Cases Of 6 Water Bottles Per Case; 7 Cases Bathroom Cleaning Powder; 1 Case of 12 Pumpkin Painting Kits; 168 Notebooks, 7 Cases Of 24 Per Case; 192 Sheer Curtains 84", 32 Cases of 6 Per Case; 480 Cans Crazy String, 24 Cases Of 20 Cans Per Case; 420 Cans Crazy String, 21 Cases Of 20 Cans Per Case; 78 cups, 13 Cases Of 6 Cups Per Case; 24 Cups, 4 Cases Of 6 Per Case; 18 Responsible Style Purses, 3 Cases Of 6 Per Case; 24 Stay Wild Handbags, 4 Cases Of 6 Per Case; 6 Responsible Style Purses; 30 Wild Fable Waste Bags, 5 Cases of 6 Per Case; 360 - 100W LED replacement Bulbs, 5 Cases Of 72 Per Case; 48 Potted Faux Plants, 12 Cases Of 4 Per Case; 88 Potted Faux Plant, 22 Cases Of 4 Per Case; 60 A New Day Purses, 10 Cases Of 6 Per Case; New AGT Model NT18K Mini Excavator, Kubota Deisel Engine, 16" Digging Bucket, Dozer Blade; New AGT Model QK18K-C Mini Excavator, Kubota Deisel, 16" Bucket, Hydraulic Thumb, Dozer Blade; New AGT Model L12R Mini Excavator, 15 Hp Gas Engine, 14" Bucket, Dozer Blade, ROPS; New AGT Model QK18RX-C Mini Excavator, 15 Hp Gas Engine, Cab, Air Conditioner, 14" Bucket, Blade; 4 = New AGT Model QK16R Mini Excavator, 15 Hp Gas Engine, Hydraulic Thumb, 14" Bucket, Dozer Blade; 2 = New AGT Model MX12R Mini Excavator, 14" Bucket, Dozer Blade, Aux. Hydraulics, Manual Thumb; 2 = New AGT Model QH12R Mini Excavator, 14" Digging Bucket, 15 Hp Gas Engine, Dozer Blade, Manual Thumb; 2 = New AGT Model KTT23 Skid Loader, 23 Hp Gas Engine, 32" Bucket, Rubber Tracks; New AGT Model 12EX-ATA 9 Pc. Mini Excavator Attachment Set; 2 = New 1 Trip 40' High Cube Multi Door Shipping Container, 4 Side Opening Doors 1 End Door; 2 = New AGT LS15R Mini Excavator, 15 Hp Gas Engine, 15" Bucket, Dozer Blade, Manual Thumb, ROPS; 2 = New AGT Model H15 Mini Excavator, 15 Hp Gas Engine, 15" Bucket, Dozer Blade, Aux. Hydraulics, 2 = New AGT Model MX15R Mini Excavator, Rato 15 Hp Gas Engine, 14" Bucket, Dozer Blade, Manual Thumb; 6 = New AGT H12R Mini Excavator, 15 Hp Gas Engine, 14" Bucket, Dozer Blade, Manual Thumb, Aux. Hydraulic; 4 = New AGT Model KTT23 Skid Loader, 23 Hp RATO Gas Engine, 32" Bucket, Rubber Tracks;

Internet Premium: 15%

Load Out Instructions: The buyer is responsible for picking up the purchased items during allotted removal dates and times. If you send a trucker to pick up your items, he must have a paid receipt, or will not be loaded. No exceptions.

Preview Date: Monday October 28, 8:00 AM to 3:00 PM

Checkout Date & Times: Loadout Date & Times: Thur. Fri. October 31, & November 1, 8:00 AM to 4:00 PM.

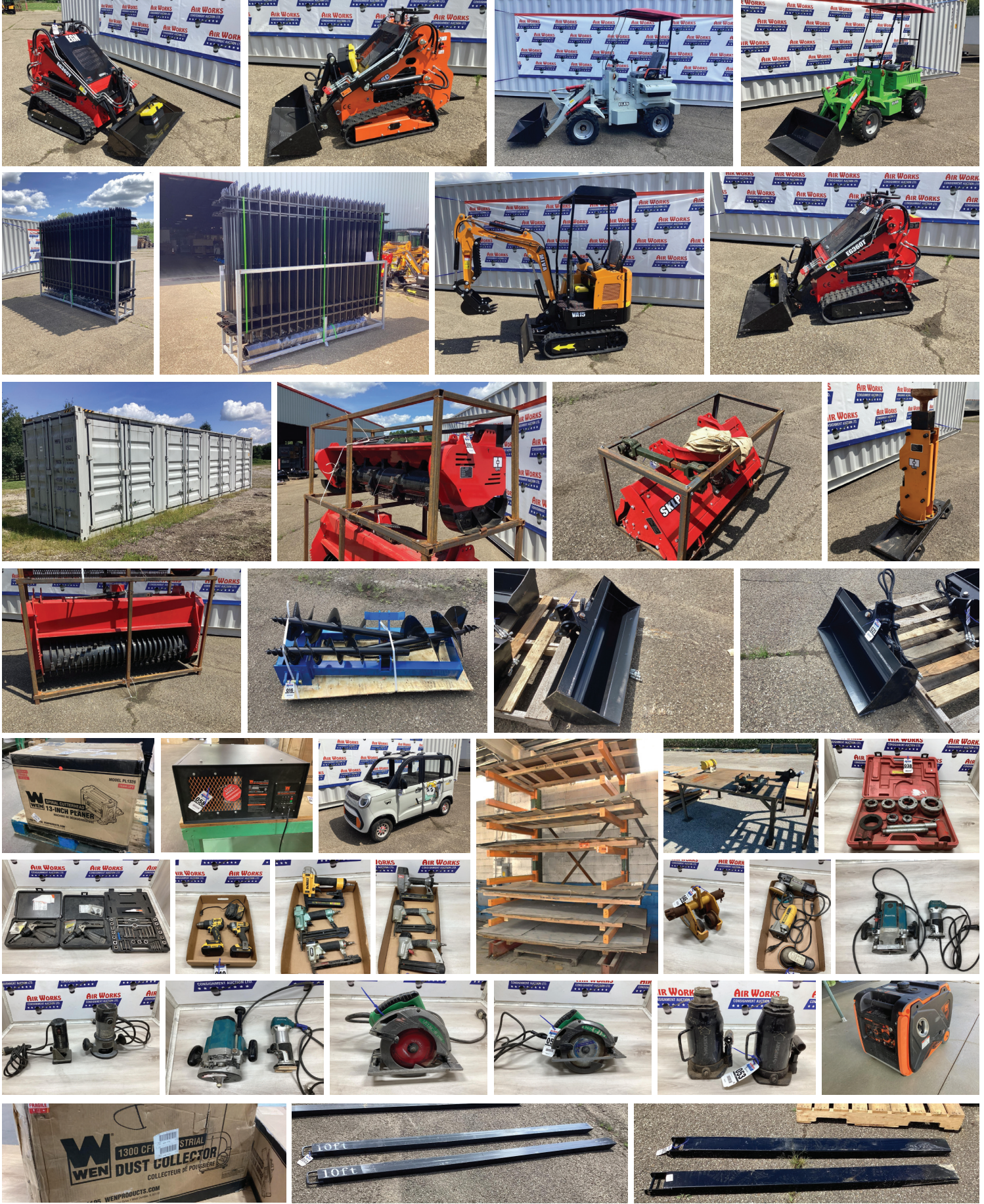
Any Questions Contact Loadout Manager Mike 330-521-0275 or Auction Manager Emanuel 330-749-7259.

ONLINE-ONLY

airworksauktion.com



BID ONLINE



GROVE EXCAVATING AUCTION

4997 Warren Rd. Cortland, OH 44410

THURSDAY
NOVEMBER 14, 2024
10:00 A.M.

Accepting Consignments For This Auction

If you have something to sell, it can stay where is and buyer will pick up at your location.

2020 Keystone RV Fuzion / Impact Trailer, Toy Hauler In Like New Condition, Stored Inside; 2019 Kubota Model L6060HSTC Tractor, Only 135 Hrs, Front End Loader; 2016 Harley-Davidson FLHTK Motorcycle, Ultra Limited, 110 Big Bore, Quick Tach Tour Kit; 2018 East Manufacturing Trailer, Windmaster Bullet Slide Kit; 2011 Transcraft Trailer, In Floor D Rings; 2011 Transcraft Trailer, In Floor D Rings; 2014 Fontaine Trailer; 2014 Fontaine Trailer; Lull MODEL 1044B Highlander Lift, Runs But Does Have Engine Issues; 2003 Trail King Trailer with Fassi Crane; Fontaine Flatbed Trailer As Is, Aluminum Deck; 2003 GMC C8500 Truck; 2005 Ford F-350 Pickup Truck, Service Body; 2001 Ford F-350 Pickup Truck;

2001 Ford F-350 Pickup Truck, Omaha Service Body; Rotobec Model 4042 HD Rotating Log Grapple with Saw; 2006 Ford F-250 Pickup Truck, 96,000 Miles, Was Used Mainly To Pull Camper Trailer and Is In Excellent Condition; 10 Ft. transport Disk; Wolverine Brush Cutter Skid Loader Attachment; Oliner 2 Bottom 3 Point Hitch Plow; Kubota Tractor Grill Guard;

New 60" Trojan Excavator Bucket, Fits 12T to 65T Excavators; Excavator Bucket; Hensley Excavator Bucket As Is; Side Rail Safety Railing For Step Deck Trailer; 4 = Precast Concrete Catch Basin 36"x 36"x 43" High; 2 = Precast Concrete Catch Basin 36"x 36"x 36" High; 1 = Precast Concrete Catch Basin 36"x 36"x 36" High; 3 = Precast Concrete Catch Basin 36"x 36"x 54" High; Precast Concrete Catch Basin 40"x40"x36" High; Precast Concrete Catch Basin 36"x36"x42" High; 7 = Precast Concrete 300 Gallon Tank; Precast Concrete 1500 Gallon Tank; Precast Concrete End Cap 38" Hole 9' Wide X 52" High;

3 = Precast Concrete End Cap 30" Hole, 84" Wide X 48" High; Precast Concrete End Cap 30" Hole, 9' Wide X 51" High;

Precast Concrete End Cap 30" Hole, 84" Wide X 48" High; Precast Concrete Spillway, 30" Hole, 84" Wide x 57" High x 48" Deep; Precast Concrete Spillway, 29" Hole, 9'6" Wide x 55" High x 60" Deep; Precast Concrete Spillway, 30" Hole, 84" Wide x 57" High x 48" Deep; 2 = Precast Concrete Spillway, 33" Hole, 15'5" Wide x 77" High x 68" Deep; Precast Concrete 24"x 24"x 166" Column With 8" Pipe; 5 Pcs. Precast Concrete Barrier Block, 24"x36"x 6' Long; 4 Pcs. Precast Concrete Barrier Block, 18"x 36"x 72" Long; 4 Pcs. Precast Concrete Barrier Block, 18"x 36"x 72" Long; Precast Concrete Manhole 46" High; 7 Pcs. Precast Concrete Sound Wall Panels, 8" Thick x 72" Wide x 23'6" High; 2 = Precast Concrete End Cap, 52" Hole, 132" Wide x 73" High; 12 Pcs. Precast Concrete Hotel Patio Deck Slabs, 7" Thick x 78" Wide x 166" Wide; Precast Concrete Sound Wall Panel of Various Sizes; 3 Pcs. Precast Concrete Retaining Wall Block, 35" High x 60" Deep x 96" Long;

Precast Concrete Retaining Wall Block, 35" High x 44" Deep x 96" Long; 4 Pcs. Prefab Concrete Retaining Wall Block, 19" High x 45" Deep x 48" Long; 6 Used Prefab Concrete Barrier Block, 24" x 24" x 60" Long; 2 Pcs. Prefab Concrete Retaining Wall Right And Left Corner Block, 19" High x 25" Deep x 48" Long; 4 Pcs. Precast Concrete Left and RIGHT Corner Block, 18" High x 26" Deep x 48" Long; 4 Pcs. Precast Concrete Triangle Block, 19" High x 48" On each Side; 10 = Precast Concrete Bridge Beam, 18" Thick x 36" Wide x 28' Long; 2000 Gallon Tank; 2000 Gallon tank Has a Crack; Backhoe Weight, Fits Case 680 Backhoe; Qty Of Steel Roofing Various Length; 3 Hydraulic Vibrators, Condition Unknown; Pallet Of 24' Galvanized Steel Panel; 18' Flatbed Truck Bed, Needs Some TLC; 21' Steel Roofing Panel; 16' Steel Roofing Panel; 21' Used Steel Roofing Panel; 2 Aluminum Semi Fuel Tanks; Stainless Truck Fuel Tank Toolbox; Semi Tire Chains; 2 I Beams, 1 - 19'6" Long / 1 16' Long; 2 Deestone Front Backhoe Tires And Rims, 11.00-16; 2 Constellation Rear Backhoe Tires and , 19.5L-24;

Cargo Carrier, Truck Hitch, Meyers Snowplow Truck Mount; Aluminum Stand; 2 Aluminum Semi Fuel Tanks; Heavy Duty Steel Semi Truck Bumpers, Front and Rear; 4 Aluminum Semi Truck Fenders With 2 Flaps And Mounting Brackets; Aluminum Truck Parts, Tool Box, Battery Compartments, Mirrors; 2 Stainless Exhaust Covers; 2 Aluminum Truck Rims; 4 Truck Rims; 2 Truck Rims; 3 Rims; 4 Rims And Tires, Comanche Radial A/T LT 225/75R16 Tires; 4 Rims And Tires, Goodyear Integrity P225/60R16 Tires; Lasermark Laser With Tripod And Transit with Wooden Tripod; 2 = Engine Stand;

Tow Behind Vacuum Powered By Briggs and Stratton Engine; Poly Overpack Drum; Used Truck Parts, Drive Shafts, PTO Shafts; Brass Radiator and 3 Buckets with Brass Fittings, Valves and Other Pipe Fittings; Scorpion 12 Volt Sprayer; 6 Pallet Forks; 2 Telehandler Forks; Approx. 16 Tire Chains; Boat Anchor; 3 Point Plow, 8" auger Bit, Spreader Bar; Misc. Hose and Flex Pipe; Wooden Ladders and Step Ladders; Rubbermaid Truck Tool Box; Aluminum Semi Trailer Ramp; Sanstorm Sandblast Pot; Aluminum Wire; 55,000 Btu Ready Heater, Sawhorses, Small air Tank, Airco System; 15 T Posts; Shovels, Rakes, Brushes, Fork, Pickaxe; Potato Fork, Sledge, Shovel, Come along; 2 Scoop Shovels, Sledge, Fork, Shovel; 3 Tampers;

Werner Model FE2024-2 / 24' Fiberglass Extension Ladder; Scrap Pile; Truck Box and Contents, Has Damage to The Front;

3 = Kidron 14' Truck body and Contents; Crystal Metal Bell with post; 3 Chain Binders And Chain; 4 Rims And Tires, 11R24.5 Tires; Misc. Hose And Flex Hose; Truck Rack For 8 Ft. Bed; Concrete Mixer With Honda Engine, Fork Pockets; 4 = Non-Stop Scaffolding; 4 = Sure Flame Model S405 Construction Heater, 400,000 Btu, Natural Gas or Propane; Master Forced Air Construction Heater; 2 = Master 375,000 Btu Propane Forced Air Heater with Thermostat; Trailer, Will Need Some TLC, Contents Not Included; Box Lot, Trailer Parts; Box Lot, Trailer Replacement Parts, Jack Handles, Door Latches, Hooks; Box Lot, Replacement Bearing And Seal Kits; Box Lot, Wiring Harness Kits; Box Lot, Redline Trailer Brake Magnet Kits; Box Lot, Wire Harness Kits, Replacement Plug ins; Box Lot, Wire Harness Kits; Box Lot, Wire Harness Kits;

Box Lot, Amber Light bulbs, Marker Lights; Box Lot, Redline Replacement Brass Fittings; Box Lot, Trailer Replacement Parts; Box Lot, D Rings, U Bolts; Box Lot, Trailer Spring Shackles; Box Lot, 5 Ball Hitches, 2 - 2 1/4" Drop, 2 - 4 1/4" Drop, 1 - 6" Drop; Box Lot, Light Mounting Brackets, Rubber Light Seals; Box Lot, Replacement Lenses; Box Lot, Redline U Bolts, Shackle Straps; Box Lot, Redline Adjustable Brake Springs; Box Lot, Redline Brake Adjusters, Lite Mate Connectors; Box Lot, Hitch Pins, Wheel Nuts; 3 Trailer Springs;

Auction Terms and Information: Cash, Check or Credit Card w/valid ID. There is a 10% buyer's premium with an additional 3% for all credit card purchases. Absentee Max-Bid Program is available for this auction, call 330-749-4362.

Check Out & Loading: Buyers will need to have a paid receipt before loading, no exceptions. The buyer is responsible for dismantling and preparing equipment for loading. Seller assistance for loading is available up to 30 days after the auction 8:00 AM to 4:00 PM daily. Otherwise, it will need to be by appointment.

Any questions contact auction manager Emanuel 330-749-7259

ONSITE AUCTION WITH ONLINE BIDDING



LOT 1
2020 Keystone RV



LOT 2
2019 Kubota L6060HSTC



LOT 3
2016 Harley Davidson



LOT 4
2018 East 42' Trailer



LOT 5
2011 Transcraft Trailer



LOT 6
2011 Transcraft Trailer, 48'



LOT 8
2014 Fontaine Trailer



LOT 9
Lull 1044B Lift



LOT 10
2003 Trail King w/Crane, 48'



LOT 11
2011 Transcraft Trailer



LOT 12
2001 Kenworth T800



LOT 13
2003 GMC C8500



LOT 14
2005 Ford F350



LOT 15
2001 Ford F350



LOT 16
2011 Transcraft Trailer



LOT 17
Rotobec 4042 HD Grapple



LOT 18
Ford F250, 96,000 Miles



LOT 21
10 ft. Transport Disk



LOT 22
Wolverine Brush Cutter



LOT 23
Oliner 2 Bottom Plow, 3 Pt



LOT 24
Kubota Tractor Grill Guard



LOT 25
New trojan 60" Exc. Bucket



LOT 26
Excavator Bucket



LOT 27
Excavator Bucket



LOT 28
Side Rail Safety Railing



LOT 29
36" x 36" x 43" Catch Basin



LOT 40
300 Gallon Tank



LOT 57
Precast Concrete Spillway

**LOTS OF
PRECAST
CONCRETE
ITEMS**



BID ONLINE

SCHMIDT & SON PALLET SHOP LIQUIDATION

410 Henry Rd. Sligo, PA 16255

FRIDAY
NOVEMBER 15, 2024
10:00 A.M.

Accepting Consignments For This Auction

If you have something to sell, it can stay where is and buyer will pick up at your location.

Doig 62" Pallet Nailer, All Mechanical; Pallet Flipper Transfer Deck, All Mechanical; Pallet Stacker, All Mechanical; Right Angle Transfer Deck For Pallet Stacker; Roll Conveyors;

Pallet Block Cutter Machine, All Mechanical; Belt Conveyor 12"x 48'; 2-Belt Conveyors 12"x 21'; 2 Large Pallet Block Bins; 2- 4039-DFJohn Deere Diesel Power Units With Clutches 5400 Hrs and 4400 Hrs.; Green Giant Lift With Honda GX160 Engine; Lincoln Ranger 250 GXT Welder; 2-Creekside Self Dumping Hoppers On Wheels; 6-Pallet Jacks; Welding Torch Set With Cart; Portable Flex Shaft Power Unit With Honda GX390 Gas Engine; Wood Furnace; Fire Alarm System; Doig Pallet Nailer For Parts; Block Cutter For Parts; Blower 12" In and 6" out; Dust Collector; Bench Grinder With Stand; Dock Plate, All Sorts Of Support Parts, Bearings, Pulleys, Sprockets, Roller Chain, V Belts, Link Belt Gearboxes And Gear Reductions of Various Sizes. Electric Motors, Hydraulic Motors, Line Shaft and Gear Boxes Through Out The Building, 8 Lumber Carts, Bolt Bins Loaded With All Types Of Bolts, Nuts And Washers, Rolling Tool Chests, All Sorts Of Wrenches, Sockets, And Other Hand Tools, 55 Gallon Drum W-D40, Heavy Duty Welding Table, Ping Pong Table, Foosball Table, Scrap Pile,

We Will Be Accepting Consignments For This Auction So Anything Could Turn Up.

Auction Terms and Information: Cash, Check or Credit Card w/valid ID. There is a 10% buyer's premium with an additional 3% for all credit card purchases. Absentee Max-Bid Program is available for this auction, call 330-749-4362.

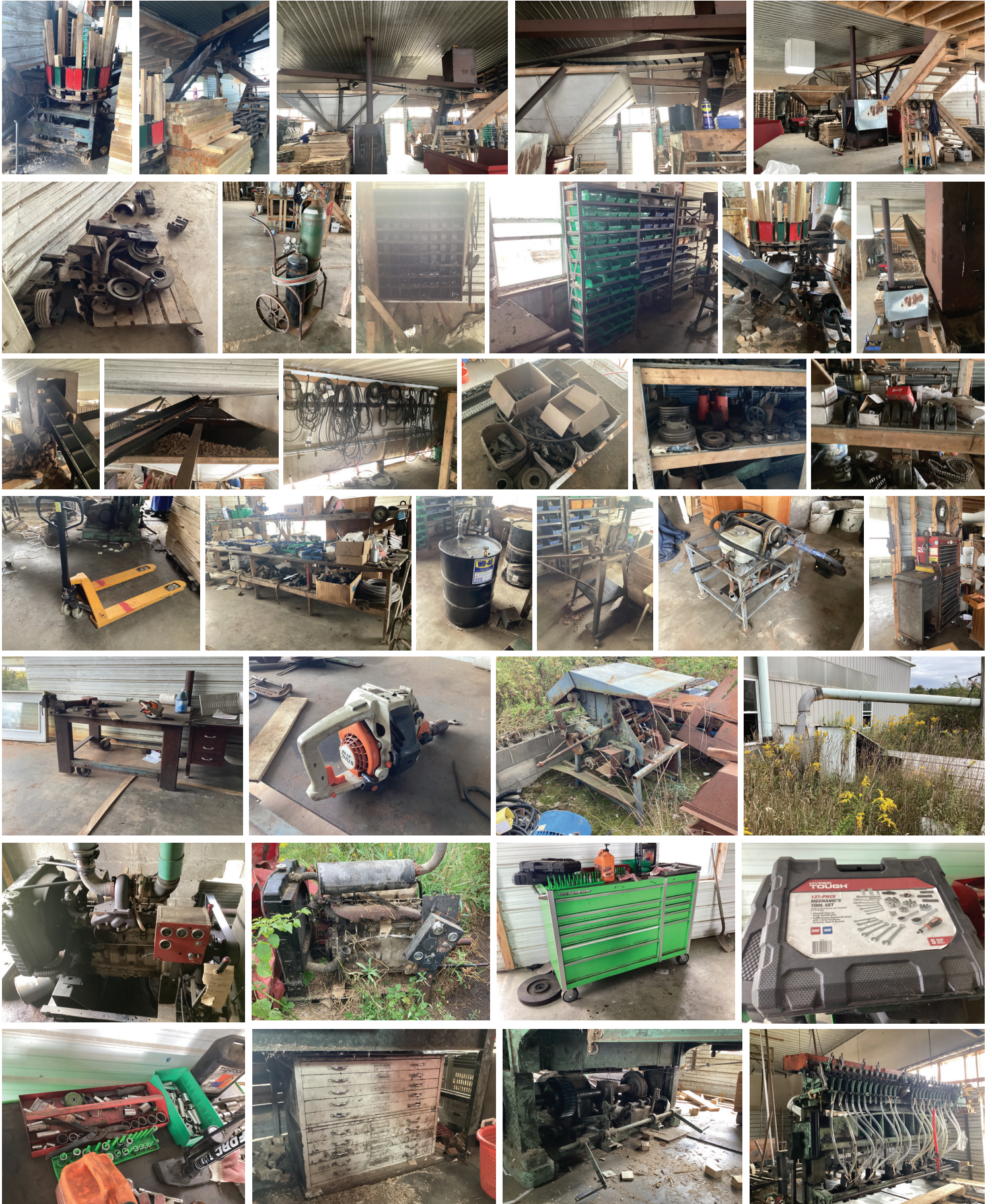
Check Out & Loading: Buyers will need to have a paid receipt before loading, no exceptions. The buyer is responsible for dismantling and preparing equipment for loading. Seller assistance for loading is available up to 30 days after the auction 8:00 AM to 4:00 PM daily. Otherwise, it will need to be by appointment.

Any questions contact auction manager Emanuel 330-749-7259

ONSITE AUCTION



200+ LOTS TO SELL



Thinking of Selling...?

INDUSTRIAL EQUIPMENT AUCTIONEERS

AIR WORKS

AIR WORKS AUCTION



**Heavy Equipment
Sawmill & Pallet Equipment
Woodworking - Metalworking
Industrial Equipment
Manufacturing Equipment
Rolling Stock**



(330) 845-8485

www.airworksauktion.com

**Specializing In
Liquidations**

AIR WORKS

AIR WORKS AUCTION



P.O. Box 242
Kidron, OH 44636

✓ Mark Your Calendar!

3 UPCOMING AUCTIONS

October 29, 2024 Online-Only Import Equipment & Tool Auction

November 14, 2024 Grove Excavating Auction

November 15, 2024 Pallet Shop Liquidation Auction



AIR WORKS

AIR WORKS AUCTION



airworksauktion.com

330.845.8485

sales@airworksauktion.com

P.O. Box 242 Kidron, OH 44636

**INDUSTRIAL EQUIPMENT
AUCTIONEERS**

330.845.8485

AirWorksAuction.com