

AIR WORKS

CONSIGNMENT AUCTION LTD.



The Complete AIR WORKS AUCTION!

37TH ANNUAL AIR WORKS CONSIGNMENT AUCTION

Mt. Hope Auction Grounds, Mt. Hope OH | Auction & Showcase Location (GPS): 8076 SR 241, Millersburg, OH 44654

AUCTION

Thursday, Feb. 13th 2025 at 8:30 AM

Friday, Feb. 14th 2025 at 8:30 AM

Saturday, Feb. 15th 2025 at 8:30 AM

See inside for an
Air Works Auction
listing and
Mt Hope Showcase
information



Air Works Consignment Auction, Ltd.

PO Box 242 · Kidron OH 44636

330.845.8485 (Office)

330.816.0006 (Fax)

office@airworksauktion.com

AirWorksAuction.com

LOCAL LODGING OPTIONS

Amish Door 330.359.7996

Berlin Encore 888.988.2414

Berlin Grande 330.403.3050

Berlin Village 330.893.2861

Carlisle Inn 855.400.2275

Comfort Inn 330.893.7400

Holiday Inn Express 234.301.9005

Sleep Inn/Mt. Hope 330.294.9977

Wallhouse 800.824.2013

Zincks Inn 330.893.6600

SHOWCASE

DON'T MISS THE

Mt. Hope

SHOWCASE

held alongside the auction!

More
Auction
Information
& Online
Bidding



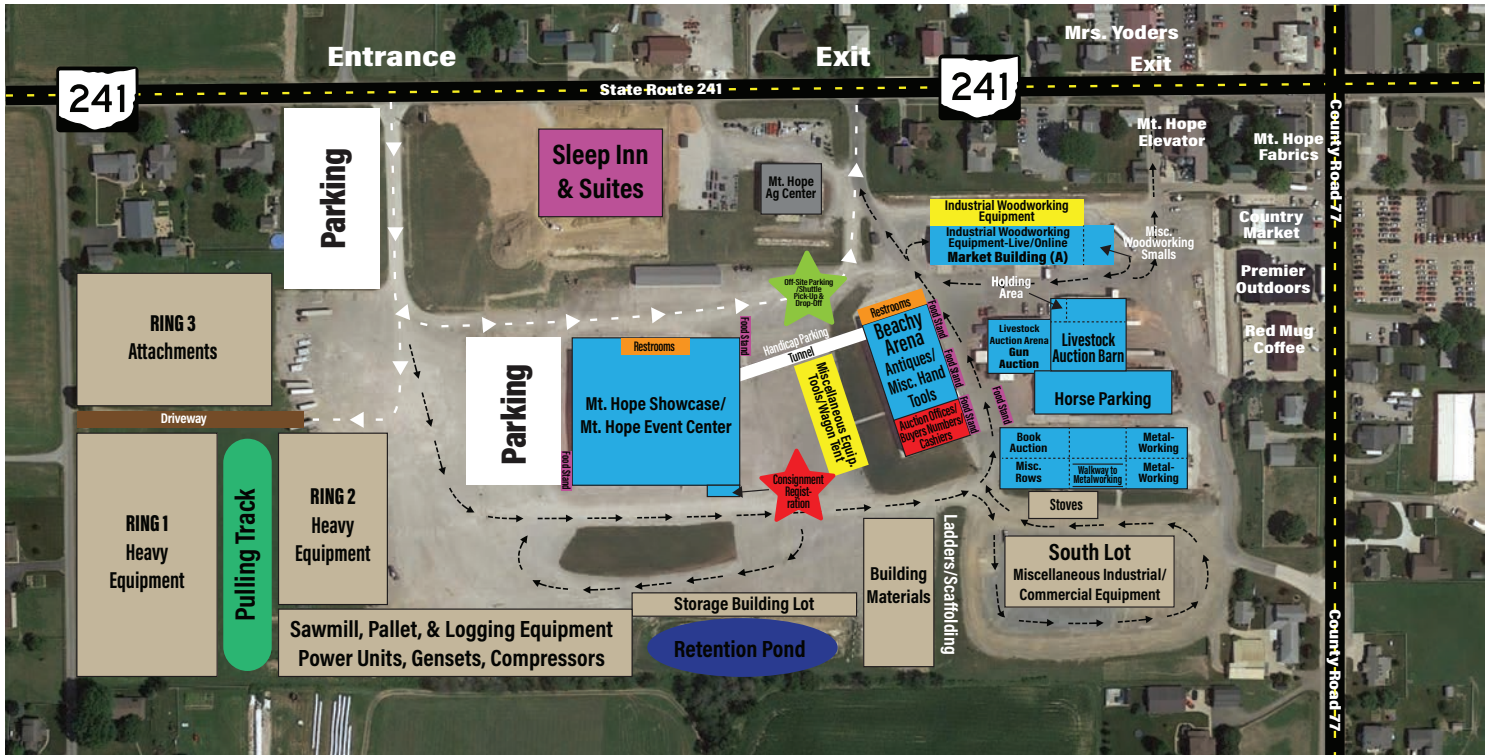
UNLOADING SCHEDULE

HEAVY EQUIPMENT & ATTACHMENTS,
SAWMILL EQUIPMENT & POWER UNITS
January 27 - 31, 2025 February 3 - 7, 2025
8:00 AM - 4:00 PM Daily

ALL OTHER INDUSTRIAL TOOLS & EQUIPMENT
February 10 - 13, 2025
or until all lots are full



The 37th Annual Air Works Auction



Air Works Consignment Auction Location: Mt Hope Auction Grounds, 8076 SR 241, Millersburg, OH 44654

Auction Terms and Information

Auction Terms: Cash, Check or Credit Card w/valid ID. There will be a 7.5% buyer's premium on-site with an additional 3% for all credit card purchases. Different terms for Online bidding will apply. All items are sold "as is, where is with no warranty expressed or implied." Sales tax does apply unless exempt.

Auction Information: For complete and updated auction details, catalogs & photos as well as online bidding links, please visit AirWorksAuction.com. (No internet = No problem) Request full auction listings and catalogs from the Air Works Auction Office at P.O. Box 242 Kidron, OH 44636 or call the office at **330.845.8485**.

Consignment Unloading Schedule: Heavy Equipment & Attachments (Anything on wheels or tracks), Sawmill Equipment, Power Units & Gensets: January 27th to February 7th. Everything else unloads the week of the auction (February 10th, 11th, 12th). **WE WILL NOT ACCEPT EARLY UNLOADING FOR THE FOLLOWING CATEGORIES:** Antiques & Books, Smalls & Construction Items, Woodworking & Metalworking equipment, Industrial Items, Building Materials, Lumber & Sheds/Cabins, Miscellaneous Items

It is our goal that your auction experience is a pleasant one. Your understanding and compliance with the above terms will help accomplish this goal.

37th Annual Air Works Consignment Auction

SALE ORDER

Thursday, February 13th

- 1 Ring Tools, Hardware
- Antiques & Collectibles will sell 8:30 am (4 auction crews)
- Sawmill & Pallet Equipment, Power Units, Gensets sells 9:00 am, Specials 12:00 Noon
- Tools, Fun Items Amateur Auctioneer Contest/Fundraising Auction 6:00 pm

Friday, February 14th

- Antiques & Collectibles will sell 8:30 am (3 auction crews)
- Highlights, Antiques, & Salesman samples sell Friday 3:00pm Ring #2
- Collectibles & Used book Auction sells (in New Arena) 8:30 am
- Tools, small items sell 9:00 am in Beachy Arena
- Woodworking Equipment sells 9:00 am (3 auction crews. 2 Rings Equip, 1 Ring Tools)
- South Lot Misc. Industrial Rows sells 9:00 am (3 auction crews)
- Big Tent- 8 Wagon Loads of Small Tools, Misc. Construction Items, Tool Rows sells 9:00 am (3 auction crews)

- Special Items, Tents, New Sioux Tools, New Dewalt & Milwaukee, Solar Systems, Other Items, Auctioneer Showcase 4:00 pm - 9:00 pm, Beachy Arena Ring #1
- 37th Annual Auction- \$3,700 in Cash Giveaway at Ring #2 Beachy Building 9:00 pm

Saturday February 15th

- Antiques & Collectibles sell 8:30 am (3 auction crews)
- Tools, Small Items sell Beachy Ring #1, 9:00 am
- Heavy Equipment, Rolling Stock & Attachments sell 8:30 am (3 auction crews)
- Metalworking Equipment sells 9:00 am (2 auction crews)
- Lumber, Ladders & Building Materials, Windows & Doors sell 10:00 am
- Storage Buildings, Sheds, Cabins, etc. sell approximately 12:00 noon
- Big Tent- 8 Wagon Loads of Small Tools, Misc. Construction Items, Tool Rows sell 9:00 am (3 auction crews)

Note: This is a generalized lineup to help you become familiar with the Air Works Auction Sale Order. Please bear in mind that this is an evolving process and that times are subject to change. Selling dates & times will be posted at all the different auction areas and locations around the Auction Grounds.

Check Out & Loading: Buyers will need to have a paid receipt to enter auction area and before loading. Free loading on Auction days. Additional free loading and assistance is provided for the load-out on heavy equipment and industrial equipment as a service to our buyers from Monday February 17th to Friday February 21st. Loading for a fee ranging from \$100 to \$500 is available from February 24th to March 1st. NOTE: All items not picked up by March 1st will be deemed abandoned and will become the property of the Air Works Consignment Auction, Ltd. and will be resold or disposed, with no refund to the buyer. **The lot is closed on Sunday.**

FEBRUARY 13TH - THURSDAY EVENING HIGHLIGHTS



You Could Be Here!

Air Works Auction - 5th Annual Amateur Auctioneer Contest

Thursday, Feb. 13

6:00 PM

The Air Works Auction will host an Amateur Auctioneer Showcase featuring various talented rookie auctioneers. Last year's amateur showcase featured auctioneers from 11 states. If you enjoy auctioneering and want to try your hand behind the auction block this will be your opportunity to do just that. Call in and register in advance at 330.988.4408 (Mattie). Limited to first 30 contestants.

The showcase will be a benefit auction and the funds will be distributed to various charitable causes.

FUNDRAISER AUCTION

Approximately 250 Lots
Hand tools, hunting apparel, and much more!



Highlight Items to be Sold by the Contest Winner!



Conference Line Available:

Thursday evening 6:00 pm: Amateur Auctioneer Competition, Ring 2

Friday evening 4:00 pm: Specials & Auctioneer Showcase, Ring 1



Join us on the Conference Line!

Conference Line Phone Number: 712-432-8773

Conference ID: 4584635#

Conference Line Troubleshooting: Dial 1-855-458-4635 then press 0 on the main menu

FEBRUARY 14TH - FRIDAY EVENING HIGHLIGHTS

The Air Works Auction Auctioneering Showcase

Friday, February 14th at 4:00 pm - Ring #1 Beachy Building

The Auctioneers Showcase will feature an entire arsenal of 20+ talented Air Works Auctioneers at around 5pm. The showcase will allow to you to listen to many of your favorite auctioneers, representing a wide variety of Rhythms & Chants as they take short 10-minute rotations throughout the evening. This should create an action-packed and entertaining evening as they sell our Ring #1 Friday evening specials from 4:00 pm to 9:00 pm, so this will be an event for all who attend the Air Works Auction to enjoy.

Friday - Ring #1 Beachy Building - Specials Start 4:00 pm



Early 1900 Wheeling & Laske Erie steam engine completely restored w/all new wooden wheels, runs great. This Quicker wooden wash machine is complete and all original wood & stenciling, works good. These units sell separately but will be displayed together.



25 FT. KIDS TRAIN

It's Our

37th ANNUAL AUCTION

& we are giving away
\$3,700 in Cash Prizes
Must be present to win
Drawing 9:00 pm
Friday evening
Ring 2- Beachy Arena

Many more special items to be sold



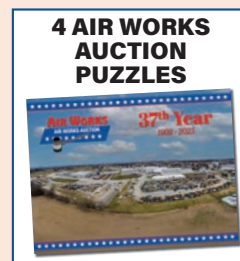
EZ BOARDWALK
1/4 SCALE



STEAM TRACTOR



WOODWORKING & CONSTRUCTION TOOLS



4 AIR WORKS AUCTION PUZZLES

HEAVY EQUIPMENT/ROLLING STOCK Sells Online/Live Saturday Feb. 15



2007 Cat D6N



2005 Chevy 8500



2006 Ford E450



40ft Container



2014 Genie S-40



2014 Manitou 5519



2016 Bobcat MT85



Komatsu PC138



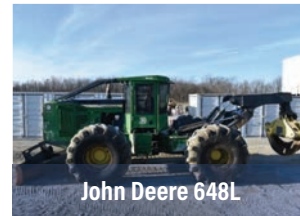
2016 GMC 3500



2017 Bobcat MT85



2018 Bomag Roller



John Deere 648L



2021 Bobcat E35



John Deere 244H



2015 563C Feller



2022 Gehl RT165



2023 Kubota



2023 LS Tractor



Case 570CXT



Case 855C



Cat D4E



Dresser 512



Farmtrac 675

Dozers; 2007 Cat D6N Dozer, 6 way blade, 15,810 hrs; John Deere 650G w/forestry package; Cat D4E, 4 way blade; Case 850G dozer w/6 way blade; Case 550G dozer w/6 way blade, 6500 hrs; Case 855C track loader, 4665 hrs; John Deere JD555 track loader, 3000? Hrs; Davis Task Force 200 mini dozer, 42in blade, Wisconsin motor; **Excavators;** 2021 Bobcat E35 mini excavator, 33.5 hp, 320 hrs; 2021 Takeuchi TB260 excavator w/24in bucket, hi-flow, rubber tracks, 6.5ft angle blade, hyd thumb, 59in bucket, 1151 hrs; 2017 Volvo ECR58D excavator w/hyd thumb, 1852 hrs; 2013 Komatsu PC138us excavator w/blade & 24in bucket, cab air/heat, hyd thumb, 6700 hrs; 2013 Kobelco SK210LC-9 excavator, 9449 hrs; 2007 Cat 328D excavator, 10,503 hrs; Kubota U55-5 excavator; Linkbelt 1600 excavator, 6,400 hrs; **Wheel loaders;** Dresser 512 wheel loader w/90in bucket, 3824 hrs; John Deere 244H wheel loader, 5,699 hrs; **Telehandlers;** 2014 Manitou 5519 telehandler w/bucket, 2502 hrs; 2007 Genie GTH1056 telehandler, 56ft reach, 10,000 lb lift, 6570 hrs; **Skid Steers;** 2023 Kubota SVL75-3 skid steer w/warranty, 74in bucket, 3 hrs; 2022 Kubota SVL75-2 skid steer, rubber tracks, 2 speed, hi-flow, 400 hrs; 2021 Bobcat T66 skid steer, 858 hrs; 2022 Gehl RT165 skid steer w/bucket; New Holland L220 skid steer, aux hyd, 2492 hrs; 2017 Kubota SVL75-2 skidsteer w/72in bucket, 2520 hrs; 2017 Bobcat Dingo MT85 w/36in bucket, 730 hrs; 2016 Bobcat Dingo MT85 w/36in bucket, 440hrs; 2008 Bobcat Dingo MT52 w/36in bucket, 947 hrs; Toro Dingo 22328, diesel, 624 hrs; Mustang MTL20 skid steer, 1855 hrs; **Manlifts;** 2014 JLG 600S 60ft manlift; 2014 Genie S-40 boomlift, 1744 hrs; **Forklifts;** 8 = New 2024 Heli CPYD25-M1H forklifts, 3 stage, 5000 lb, lpg gas; 2 = New 2024 Heli CBD15S forklift, 5000 lb, 3 stage, LPG; 2020 Doosan D45S-7 diesel forklift, 68in forks, 2526 hrs; Hyster W40Z electric pallet jack w/new batteries, 4000 lb; Yale industrial forklift, LP gas, 4119 hrs; Lapco 10,000 lb. pallet jack; Yale forklift, propane; Raymond 20C-R30TT electric forklift, 3000 lb, 24 volt; 2016 Toyota 8FGU32 forklift, new engine, LP gas, 16,800 hrs; 2016 Toyota 8FGU32 forklift, LP gas, 16,341 hrs; **Backhoes;** Kioti DS4510HS tractor w/backhoe, 1000 hrs; Pettibone GS200 forklift, 20,000 lb. lift, LP gas, 2140 hrs; **Tractors;** 2023 LS MT335H, 35 hp hydrostatic diesel tractor w/loader, 80 hrs; Ford 5000 diesel tractor, 4300 hrs; Ford N/H 5635 4WD tractor, 1800 hrs; Mahindra M-Power 85 4WD tractor, 1000 hrs; Farmtrac 675 4WD tractor w/loader, 1000 hrs; Ford 2110 4x4 diesel tractor w/cab, 2400 hrs; IH 1486 tractor w/cab air/heat, 8100 hrs; Case 570CXT 4x4 tractor w/loader and 3 point, 3432 hrs; Ferguson TO-30 tractor; **Skidders/Fellers;** 2016 John Deere 648L skidder, 12,605 hrs; 2015 Cat 563C feller/buncher, 7501 hrs; **Log Loaders; Chippers; Trucks;** 2021 Chevy 5500HD 6.6L Duramax w/custom dump bed with fold in sides and gooseneck hitch, 85,000 miles; 2016 GMC 3500 4 door diesel truck w/large construction cap on back, 212,000 miles; GMC C4500 4 door automatic w/west coast hauler bed, 130,000 miles; 2006 Ford E450 diesel box truck w/15.5ft x 7ft hi x 8ft wide box, 168,000 miles; 2005 Chevy C8500 dump truck w/10ft bed, 64,262 miles; 1999 Kenworth T-600 semi tractor, double bunk, Detroit 60 series, 848,000 miles; **Trailers;** 2020 Cargo Express 6 x 12 enclosed trailer w/Lincoln 305G Ranger electric welder; 2019 Chubbs Steel GT-714 dump trailer; 2017 American Hauler enclosed trailer, 75' x 14' black tool trailer w/ramp door; 2017 Discovery trailer, 7 x 18 tandem axle with ramp door, sells w/pressure washer system, W2 GX630 Honda engine tanks and hose; 2022 Coffee Creek Mfg 27ft gooseneck trailer, CVW 14,000 lbs, 16 ply tires; 2015 PJ 14ft dump trailer; 2014 16ft United

HEAVY EQUIPMENT/ROLLING STOCK Sells Online/Live Saturday Feb. 15

enclosed trailer; **Cars, Campers, ATV's, Boats;** 2019 Chevy Express van, 15 passenger, 177,000 miles; 2019 Polaris Ranger XP1000, crew cab, 4x4, 952 hrs; 2017 Polaris Ranger 1000, 4x4, 230 hrs; Polaris Ranger UTV, battery powered; **Rollers;** New 2024 Fland FL850 ride on roller vibrator, 420cc gas motor; 2018 Bomag BW-120SL-5 tandem roller; **Attachments;** New 2024 GIY TSH72 72in forestry mulcher attachment, hyd; 2015 Cat forestry head w/multiple attachments; New lots of skids of attachments for mini skid steers and mini excavators; 4 = New 2024 GIY 3T hyd. excavator thumb; 2 = New 2024 Miva mini excavator rake attachment; Misc; New 2024 SKLP SK140 2 blade rotary tiller, 3 point hitch; New Jenkins 76in grapple bucket, hyd; New Lawsen 48in skidsteer forks; 2021 Altoz 6iin mower; Presto Lifts, hydraulic pallet stacker, 2 stage; Cushman stock chaser cart, 24v battery powered; 2021 Totem 40 forestry grapple, opens 51in; 2021 Fecon FMX36EXC mulching head, fits Takeuchi TB260; 14ft roll conveyor;

17 Containers of Import Equipment; Storage Containers; 3 = New 2024 40ft container w/4 doors on one side; **Excavators;** 4 = New 2024 Miva VA13C mini excavator, enclosed cab, 13.5 hp gas motor; 4 = New 2024 Miva VA15 mini excavator, 13.5 hp gas motor; 6 = New 2024 VA13 mini excavator, 13.5 hp gas motor; **Skid Loaders;** 2 = New 2024 AGT Industrial YF2-380 mini skid loader on tracks, 15 hp gas motor; 5 = New 2024 EGN EG36C mini skid loaders on tracks, 13.5 hp gas motor; 5 = New 2024 EGN EG360T mini skid loader on tracks, 23 hp gas motor; **Wheel Loaders;** 2 = New 2024 FL45 Fland wheel loader, 13.5hp gas motor; New 2024 Traner EL45 battery wheel loader; 2 = New 2024 GIY Gy-72pro mulcher attachments; **Vehicles;** New 2024 MECO M-F battery vehicle;

Attachments; 10 skids w/9 pcs Miva excavator attachments per skid including, quick hitch, rake, ripper, grabber, 12in auger, 8in bucket, 20in bucekt, 32inch bucket with 6 pcs pins; 2 = New 2024 GIY excavator thumbs; 2 = New 2024 GIY excavator buckets; 7 = New 2024 GIY 8in, 12in & 16in auger sets; 2 = New 2024 Miva 3pc excavator attachments including, bucket, ripper & rake; 3 = New 2024 Miva jack hammer attachments; New 2024 Miva tilting excavator buckets, includes, 2 = 16in, 5 = 24in, 5 = 32in & 5 = 40in; New 2024 Miva attachments, includes, 2 rakes, 2 = rippers, 2 = grapples & 2 = hedge trimmers; New 2024 GIY skid steer post driver attachment; New 2024 SKLP extension forks, includes 4 = 7ft & 2 = 10ft;

Folding Houses; New 2024 21ft Folding Portable House/Office, 2 bedrooms, 1 living room; 2 = New 2024 19ft folding storage building/mobile office w/1 window & 1 door; Fences; 7 lots w/20pcs 10ft long x 7ft high per lot landscaping fences;



Floor Sweeper



Ford 2110



Genie GTH1056



GMC C4500



Bobcat MT52



2021 Altoz Mower



Pettibone



John Deere Track Loader



Kioti DS4510HS



John Deere 650G



International 1486



2020 Doosan D45S-7



Linkbelt 1600



Mahindra 85



Kubota SVL75 (2)



Hyster W40Z



Toro Dingo



Takeuchi TB260



Kubota U55-5



New Holland 5635



Polaris Ranger



Toyota 8FGU25 (2)



Yale Forklift



2007 Cat 328D



New Holland 220

HEAVY EQUIPMENT/ROLLING STOCK Sells Online/Live Saturday Feb. 15



2019 Chevy Express Van



2021 Bobcat T66



Heli Forklift



Pressure Washer Trailer



Toyota FGU 32



Mustang



2019 Dump Trailer



Power Trowel



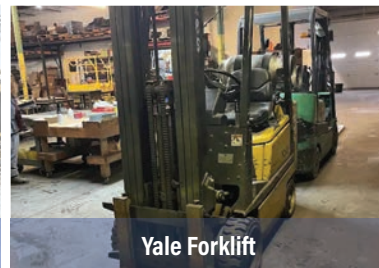
Pallet Jack



Wacker Power Trowel



Power Trowel



Yale Forklift



Toro Dingo



Forestry Grapple



Forks



Presto Lift



Hydraulic Thumb



Mini Skid Steer



Mini Skid Steer



Mini Skid Steer



Mini Skid Steer



Miva Mini Excavator



Mulcher Head



Mulcher



Jenkins Grapple

**CONSIGNMENTS
ADDED DAILY**

**SEE THE UPDATED LIST AT
airworksauktion.com**

SAWMILL/LOGGING & PALLET EQUIPMENT/POWER UNITS & COMPRESSORS
Sells Online/Live Thursday Feb. 13th



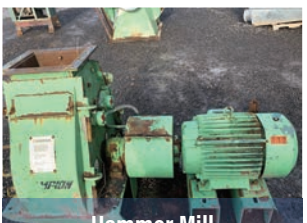
Detroit Diesel Skid



Blower



Blower



Hammer Mill



Mixer



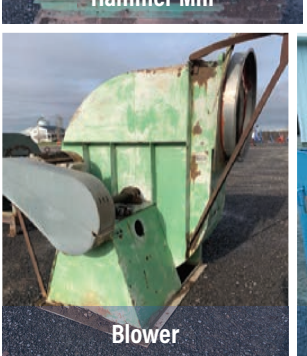
Newman KM-16



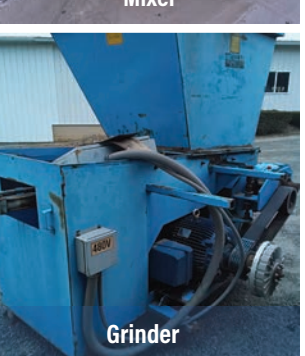
Roll Conveyor



56 Inch Saws



Blower



Grinder



Pellet Machine



Rotary Magnet



Accu Cut Edger

Sawmills; 2025 Timber Bubby XP380 industrial band sawmill w/John Deere engine, 38in x 20ft log cap., 2in band, log lift, mud saw, laser computer networks; 2025 Timber Buddy MP362 bandmill w/35hp Vanguard motor, 34in x 20ft log cap., 1.5in band, battery power feed; 2025 Timber Buddy MP362 manual bandmill w/35 hp Vanguard motor; 2025 Timber Buddy MP360 manual bandmill w/23 hp Vanguard motor; 2025 Timber Buddy MS24 manual bandmill w/13 hp gas motor, 24in x12 ft log cap.; EZ Boardwalk ¼ scale M40 bandmill; Smicksburg sawmill, 16ft 4 headblock carriage (3 working) 2in x 36in band wheels, 40ft track, belt drive; Frick sawmill Model 0 husk belt drive; **Resaws;** 2017 Baker BBR-0-3 2 head resaw, 230/460v 3ph; **Carriages;** Frick 3 headblock carriage on 25ft track; **Chop Saws;** Newman KM-16 6-head trim saw, hyd; **Edgers;** New Accu-Cut H636M edger w/2 15/16th mandrel shaft, 6in x 36in, 2 blades, 1 movable, belt drive, no power; Crosby 36in edger w/infeed rolls; 3 blade edger, 2 movable, belt driven; **Chippers;** Tub grinder, 60 hp; **Conveyors & Roll Cases;** 36in x 10ft conveyor; 39in x 76in roll conveyor; **Blades;** 3 = 56in blades; **Blowers;** Williams blower, 18" inlet 17" outlet, no power, belt driven;



1/4 Scale M-40 Sawmill



Newman KM-16

NEW FOR 2025 SAWMILL EQUIPMENT & POWER UNITS, GENSETS, COMPRESSORS SELLING ON THURSDAY

SEE THE UPDATED LIST AT
airworksauction.com



Timber Buddy XP380



Baker Resaw



Crosby Edger



Conveyor

Power Units; New Kubota D1803 power unit, Murphy controls, 35 hp; Rebuilt John Deere 4.202 power unit, Murphy controls, 60 hp; 1995 Detroit 6067GK28 power unit, 450 hp, 6550 hrs since rebuilt, includes 14 hydraulic pumps; 1995 Detroit 6067 MK28 power unit, rebuilt, 12.7L 60 series, 450 hp; Detroit 471 diesel w/turbo, clutch, 160 hp; Deutz F6L912 power unit w/ clutch, 112 hp; Perkins diesel, 160 hp, 65,689 hrs; 371 Detroit diesel, 100 hrs since rebuilt; Cummins 5.9 power unit, new clutch, radiator, alternator and starter, 190 hrs on rebuilt; **Compressors;** Champion HRA25-12 air compressor, 25 hp, 220v 3ph; C & H 25 hp air compressor on 80 gallon tank, 230v 3ph; 2019 Unused Koger Air 12-2-482 12in rotary air-lock, 2hp 230v 3ph; Dresser 400 series air compressor as is; Kobalt 60 gallon air compressor, 220v; **Gensets;** 1993 Cat 3412 Diesel Genset, 600kw, 890 hp, 18,866 hrs, only 3 h. rs on complete rebuilt; 2010 Cummins Onan 300kw genset; Cat 3306 100kw natural gas genset, 12,290 hrs, has some blow by; Generac 5000 watt generator; Generac 5500 watt generator; **Hydraulics;** 600 gallon hyd. tank; 2 = skids of assorted new and used hyd. fittings & motors; Misc



Cat 3306 Genset



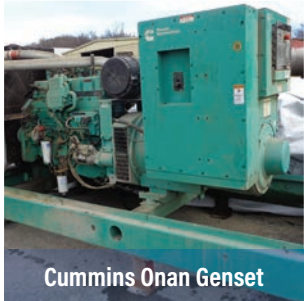
Frick 0 Husk



Rotary Magnet



Cat 3412 600KW Genset



Cummins Onan Genset



Air Compressor

WOODWORKING EQUIPMENT Sells Online/Live Friday Feb. 14 (Multiple Rings)



2012 Weinig Hydromat 2000



Diehl 750 Straightline



Delta 15in. Planer



Fladder 300 Gyro



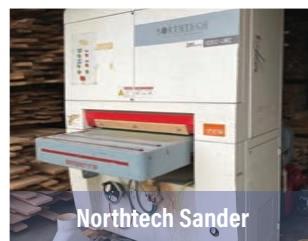
Downdraft Table



Downdraft Table



Downdraft Table



Northtech Sander



Dewalt Scroll Saw

Table Saws; 2024 Oliver 10046 10in table saw w/52in extension, 115v; 2024 Oliver 4016 10in table saw w/52in extension, 220/440v 3ph; Delta 34-806 10in table saw, 5hp 230v 3ph; Rockwell 34-761 10in table saw, 5hp 230v 3ph; 2004 Jet JWTS-103F 10in contractors table saw; Deihl 750 straightline rip saw; SCMI S115F sliding table saw; Powermatic 70 table saw, no motor; Delta 10in Unisaw w/52in fence; Powermatic 72A table saw, hyd; **Panel Saws;** Carlson Elkstom E straightline rip saw 22/440 3ph; **Planers;** 2024 Stonewood ST20 20in planer w/spiral cutter head, no motor; 2024 Stonewood ST24 24in planer w/spiral cutter head, no motor; 2024 Stonewood ST24AH 24in planer w/spiral cutterhead, digital readout, 230v 3ph; 2024 Stonewood STC-760MH 30in planer w/spiral cutterhead, digital readout, 230v 3ph; Delta DC-380 15in planer, 110v; **Joiners;** Delta 37350 Invicta 8in long bed joiner; **Chop Saws;** Whirlwind 1000R 14in upcut saw; Ironwood Cut18 upcut saw; Indiana upcut saw, 3ph; Hitachi air miter saw; Weaver 26in truss saw powered by 5 hp Honda; **Shapers;** 5 = Powermatic 26 shaper, 1in spindle, 5hp, 230v 3ph; 2 = Powermatic 27 shaper, 1.25in spindle, 5 hp, 230v 3ph; Powermatic 27 shaper, 1in spindle, 5hp, 230v 3ph; 2024 Stonewood 525M 1.25in spindle shaper, 230v 3ph; Bridgewood BW310SL shaper on mobile base w/3/4 in and 1.25in spindles, hyd; **Bandsaws;** 3 = 2024 Stonewood SBW3501D 14in bandsaw, 110v; 2 = 2024 Stonewood SBW4300A 17in bandsaw, 220v 1ph; 2024 Stonewood SBW6300H 24in bandsaw, 220v 3ph; SCMI SC-900 bandsaw, 36in, 3ph; Jet JWBS-14 bandsaw, 120v; Rockwell vertical bandsaw, 110v; **Wide Belt Sanders;** 2004 Northtech NT-EV-920C-LMC 36in widebelt sander, lineshaft; Sanding Master 505B2,900 widebelt sander, 36in double head, 220v; Extrema Excess Series 36in x 60in widebelt sander, 3ph; SCMI 37in double head wide belt sander, 230v 3ph; **Moulders;** 2008 Weinig H-2000 Hydromat moulder, 5 head, hyd; 2012 Weinig H-2000 Hydromat moulder, 6 head, hyd; **Pin Routers;** Danckaert over arm pin router, 230v 3ph; Wadkin UX/B1/81458 over arm pin router, 230v 3ph; Custom vinyl railing spindle router, 3ph; **Edge & Drum/Spindle Sanders;** 2019 Accura 03525D drum sander; Oliver 6305.001 edge sander, 120v; Grizzly G1066R drum sander, 220v; Oakley H648 6in x 145in oscillating belt sander. Lineshaft; 2006 Grizzly G1140 6in x 80in edge sander; 1998 Grizzly G1066 24in double drum sander, lineshaft; 1998 Fladder M21427 fladder sander; Larick MO-152 profile sander, 220/240v; New Air Stream orbital cross grain sander, air; Beach 63No7 stroke sander, 230v 3ph; Ballo drum sander; **Boring Machines;** 2024 Stonewood 23-PILB 23 spindle pneumatic line boring machine, 220v 1ph; 2 = 2024 Stonewood 13-MLB 13 spindle manual line boring machine, 110v; New Pocket Rocket pocket hole machine, lineshaft; Craftsman drill press, 110v; **Dovetailers;** 2 = 2024 Stonewood JDT65 manual dovetailer, 220v 1ph; **Clamping Machines;** 2024 Doucet SDM-TM single door clamp, 30in x 72in cap.; 2024 Doucet NWR-6 panel clamp rack w/40in clamps; Quick 30 section clamp carrier, 6 clamps per section, 3.5in jaws, 8.5ft wide, automatic, panel flattener, hyd. 230v 3ph; Glue applicator 26 in x 21ft, 480v 3ph; 2019 Doucet NWR-6 clamp rack, 40in clamps; Ritter 10ft face frame table, air; Ritter face frame table; 2024 Stonewood STO-4008 face frame table w/3 pneumatic clamps; 2024 Stonewood STO-4008 face frame table w/manual clamps; **Mortise & Tenoners;** Unique 336-4 door machine; Unique 330 door machine, 440v; **Edgebander;** 2007 Holzer 1310 Sprinter edgebander; Notcher; 2024 Stonewood JS-355 notching saw, 230/460v 3ph; **Dust Collectors;** 2024 Dust Pro Dus-3030 downdraft table, 45in round top, 115in; Jet JCDC-3 cyclone dust collector; 2 = 2019 FLSTD54S5 3 x 9 down draft stations w/baghouse; 2 = 4 x 8 downdraft tables, 110v; Ferrari dust blower; Baldor 4in dust blower, 110v; **Finish Spray Equipment;** 2006 Grizzly G0532 dry spray booth, 2hp 1ph; **Misc;** Recycling Technologies RT-35 hopper feed grinder, 60 hp, 480v; Dump hopper D-200-LD 2000 lb, self dumping; 2024 New Grizzly G0450 electric motor 15 hp 3ph; 2024 New Grizzly G0450 control box off sander, 3ph; Hyster W40Z electric pallet jack, 4000 lb; 1997 Comec SPL/3R folding hyd. chair assembly press 3ph; 1000 gallon air tank; Semi automatic pallet wrapper; Banding cart w/complete set of tools; Travaini TR0500S-1A vacuum pump unit, 40 hp, 5,429 hrs, 230v 3ph; Dewalt DW788 scroll saw on stand, 120v; Economy battery lift, needs battery; 2024 Wright WRI-10055 1 yard self dumping hopper, 5000 lb; Chucker w/chuck heads, 110v; 60 = 32in clamps; Binks 2 fluid pumps;

SELLING 2 SEMI LOADS NEW GENERAL WOODWORKING EQUIPMENT



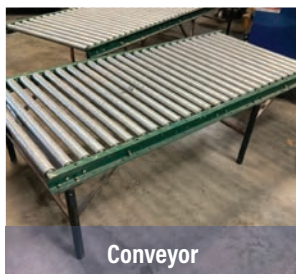
Airstream Sander



Clamp Carrier



Clamps



Conveyor



Craftsman Drill Press



Dust Collector



Custom Vinyl Mortiser



Drum Sander



Edge Sander



Clamp Table



Glue Applicator

WOODWORKING EQUIPMENT Sells Online/Live Friday Feb. 14 (Multiple Rings)



Dump Hopper



Holz Her Edgebander



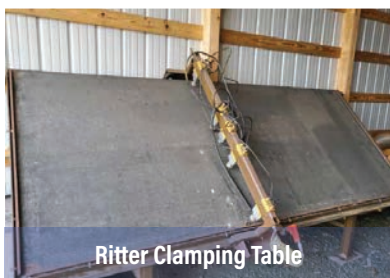
Drill Press



Pocket Hole Machine



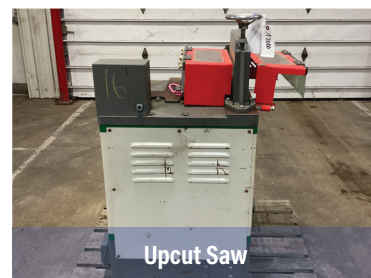
Powermatic 70 Table Saw



Ritter Clamping Table



Straightline Rip Saw



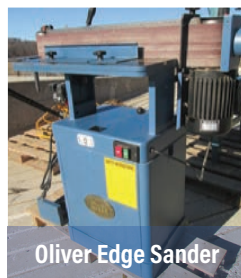
Upcut Saw



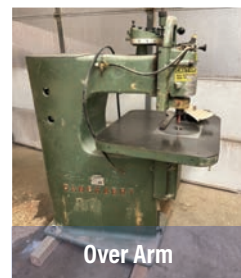
Ritter Clamp Table



Unique Door Machine



Oliver Edge Sander



Over Arm



Jet Bandsaw



Powermatic 26



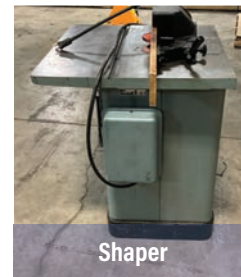
Powermatic 27



Rockwell Bandsaw



Rotary Air Lock



Shaper



Whirlwind Upcut Saw



LARGE SELECTION OF NEW MACHINES CONSIGNED BY AW MACHINERY



2-Head Wide Belt Sander



Larick Profile Sander



Upcut Saw



Wadkin Pin Router



SCMI Table Saw

METALWORKING EQUIPMENT Sells Online/Live Saturday Feb. 15 (Multiple Rings)



GMC 10'x14GA
14 Ga. Power Shears



Leblond Metal Lathe



Metal Lathe



Metal Lathe



Metal Saw



Slasher



Welding table



Steel Cutter

Milling Machine; 2015 Haas TM2P w/10 tool stations, 21,850 hrs, 220v 3ph; Cincinnati #3 milling machine; Cincinnati milling machine turn table; 1991 Microcut 837 milling machine, 230v 3ph; Bridgeport milling machine, 230v 3ph; **Iron Workers;** Wysong 100-SW iron worker; **Drilling Machines;** Delta drill press; Avey drilling machine; Walker Turner drill press, 110v; **Metal Lathe;** Warner Swasey 1990 turret lathe, 220v 3ph; IFC metal lathe; Leblond M00004 dual drive lathe, lineshaft; Southbend 183C lathe; Heald 72-19 grinder, 14in chuck; 3 = Brown and Sharpe screw machines w/feeders, 3phase electric; American Pacemaker 14 x 78 metal lathe; **Presses;** Bantam B212 12 ton press brake, pneumatic; BTM P-5-HX3in punch press, pneumatic; **Rollformers;** Hayes Bradbury 15 stand ag panel rollformer; **Decoiler;** RLM 100-24 uncoiler; MRS 3 station powered decoiler, 220v 3ph, needs new air over electric valve; **Metal Saws;** Wellsaw 1118 metal bandsaw, 220v 3ph; Wellsaw V-20 vertical metal bandsaw; Peerless 7 x 7 steel saw, 3ph; Startrite H25-A autosaw, 220v 3ph; Racine metal cutting saw; Unused sand blaster w/gauges; New import hydraulic hose crimping machine; **Plasma Cutters;** Thermal Arc PAK44 plasma cutter; Shears; GMC EPS-1014E metal shear, 10ft x 14ga, 920 hrs, 3ph; Schleichbach MS1250 slasher, 18ga x 48in slitter, Elgo PLC controls, 220v 3ph; Wilder LD2051 gang slitter, 110v; **Grinders;** Porter Cable belt grinder; **Misc;** Swenson 64 hand shear, straight or hip & valley; Pittsburgh 1 ton shop crane; Central Machinery 20 ton shop press; Machinists vise; 3ft x 6ft welding table; Hastings 5 US1-Hr heat transfer machine, 110v; Burr King 150S vibra burr finish vibrator, 110v; Vibrodyne VE800 finishing vibrating machine, 120v; Renegade FL9000 auto parts washer, 230 3ph; C & M Topline 300 findiz vibrator machine, 110v;

Complete Metal Shop Liquidation; Clausing Colchester 21in engine lathe, 32in gap bed, 21in x 80in cap., hyd., doesn't always stop to shift into 1100 gear; 1-A Warner Swasey cross sliding turret lathe, hyd; #4 Warner Swasey turret lathe, hyd, lathe doesn't run due to no hydraulic pressure in head; Cincinnati #3 milling machine, hyd, clutch and brake needs attention; Barnes #5 Morse taper spindle drill press, 220v 1ph; Hossfeld bender; Ellis 1500 bandsaw, 110v; Uni-Hydro 42 ton ironworker, 220v 1ph; 6 x 8 grinder sander, 110v; Flextur 4ft x 8ft jig welding table, like new; Miller Shopmate 300DX welder, mig, stick and tig w/22Awire feed; 12 skids with misc. tooling for metal working equipment.

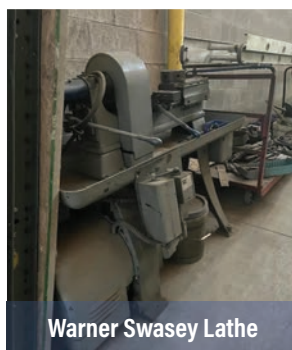
(Sells off-site; Cincinnati 750BS 75 ton punch press, 460v 3ph; 2006 MRS 3 station decoiler, 220v 3ph; Cooper Weymouth Pearson 4R-18 18in coiler/uncoiler, Coil-matic HF; 220v 3ph; Jaco flattener)



Haas Mill



Pacemaker Lathe



Warner Swasey Lathe



Wellsaw Bandsaw



20 Ton Press



75 Ton Punch Press



Bandsaw



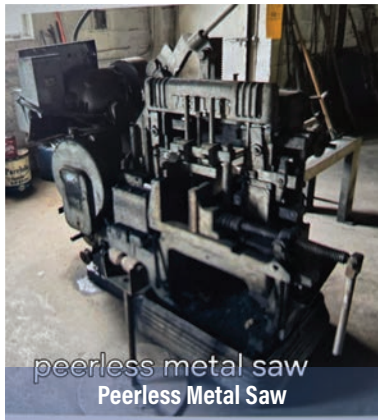
Parts Washer



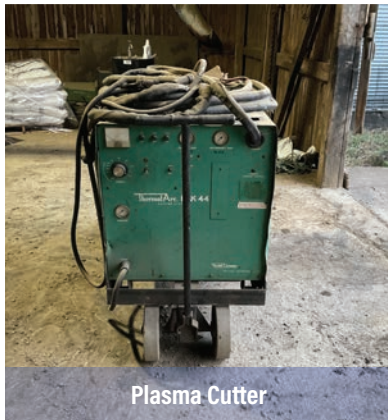
Bantam 12 Ton Press Brake



Bridgeport Milling Machine



peerless metal saw
Peerless Metal Saw



Plasma Cutter



Screw Machine



BTM Punch Press



Fanuc Metal Cutter



Gang Slitter



Grinder



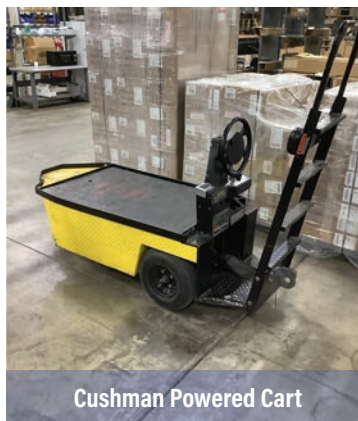
Heald 72-19 Grinder



Cincinnati Mill



Coiler



Cushman Powered Cart



Hose Crimper

COMPLETE METAL SHOP LIQUIDATION

Clausing Colchester 21in engine lathe, 32in gap bed, 21in x 80in cap., hyd., doesn't always stop to shift into 1100 gear; 1-A Warner Swasey cross sliding turret lathe, hyd; #4 Warner Swasey turret lathe, hyd, lathe doesn't run due to no hydraulic pressure in head; Cincinnati #3 milling machine, hyd, clutch and brake needs attention; Barnes #5 Morse taper spindle drill press, 220v 1ph; Hossfeld bender; Ellis 1500 bandsaw, 110v; Uni-Hydro 42 ton ironworker, 220v 1ph; 6 x 8 grinder sander, 110v; Flextur 4ft x 8ft jig welding table, like new; Miller Shopmate 300DX welder, mig, stick and tig w/22Awire feed; 12 skids with misc. tooling for metal working equipment.



Microcut 837 Milling Machine



Wysong Ironworker

**CONSIGNMENTS
ADDED DAILY**

**SEE THE UPDATED LIST AT
airworksauktion.com**

THURSDAY FEBRUARY 13, RING 1

NEW DEWALT & MILWAUKEE TOOLS



USED CONTRACTOR & WOODWORKING TOOLS



**AUCTIONEER CONTEST
6:00 PM**



FRIDAY & SATURDAY FEBRUARY 14 & 15, 3 RINGS In 60' x 200' Tent



USED CONTRACTOR & WOODWORKING TOOLS



SATURDAY FEBRUARY 15

BUILDING MATERIALS



LUMBER

SHEDS/MINI BARNs



LADDERS & PLANKS



CONSIGNMENTS AFTER JANUARY 9TH

Consignments Coming In Daily

Heavy Equipment; 2013 Linde H45T forklift, 9000 lb. 10,068 hrs; Kenworth dump truck; Cat 312EL Excavator; Cat 420D Tractor Loader Backhoe W/Extenda Boom, Cab, 4 WD; Kioti DK455 Tractor Loader Backhoe W/Quick-Tach, Cab Heat/AC, 4 WD; 1988 International M 1654 Dump Truck, Automatic, 7.3 Diesel, Air Ride, Single Axle, 19.5 Tires, 10' Dump; Bobcat 843 Skid Loader, 4000 Hrs; Bobcat 763 Skid Loader, 3000 Hrs; Bobcat 553 skid Loader, 3000 Hrs; Bobcat 873 Skid Loader, 3000 Hrs, Cab, Heat/AC; Massey Ferguson 2607 H Loader Tractor, 1800 Hrs. 4 WD; Terex Tractor Loader Backhoe with Extenda Hoe, Showing 800 Hrs; Kubota L3600 Loader Tractor, 4 WD; John Deere 1024 Tractor, Loader, 60" Belly Mower, 4 WD, 600 Hrs; 2012 John Deere 5075E tractor, 75 hp, 4 WD, liquid filled tires, trailer hookups, 5990 hrs;

Sawmill equipment; Like New BBR-O Baker resaw single head: Baker BB-O-C 2-Head Resaw;

Woodworking; Quick 12ft clamp carrier, semi-automatic, 30 sections, air and 3 phase electric; Quick F-CGap-20-10 glue applicator, 20in x 12ft; Recycling Tech TR-35 Hopper feed Grinder; Muller 303 Pallet wrapper, SCMI 37" 2-head sander; Voorwood A178A Shape N Sand; Seco 20 inch band saw;

Metalworking; Piranha P3 ironworker; Tinnsmith H-B12116 Manual brake; **Sells Offsite: Hans Schroder MPB2000/2 Folding machine located in PA;** Niagara SP10-10 Hyd shear w/back gauge; Wysong MTH140-144 140 Ton 12ft Hyd Press break; Euromac MTX Index 33 Ton CNC Punch press;

Power Units; Duetz 6 cyl. diesel, 80 hp, 22,000 hrs; 14kw generator; 7.5 hp Quincy compressor;



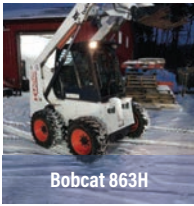
Niagara SP10-10 Hyd Shear



2012 John Deere 5075E



Bobcat 553



Bobcat 863H



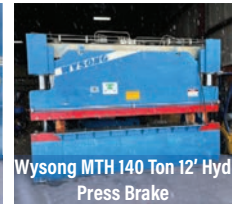
Piranha Ironworker



Cat 312EL



Euromac 33 Ton CNC Punch Press



Wysong MTH 140 Ton 12' Hyd Press Brake



Hans Schroder MBP20002 Folding Machine



Hydraulic System



International M Dump Truck



John Deere 1024



14KW Generator



Kenworth Dump Truck



Kioti DK455



Kubota L3600



Linde H45T



80 HP Deutz

**Many more consignments added before Auction Day.
Bring a Friend & a Trailer & Enjoy!**

Thinking of Selling...?
INDUSTRIAL EQUIPMENT AUCTIONEERS

AIR WORKS
AIR WORKS AUCTION

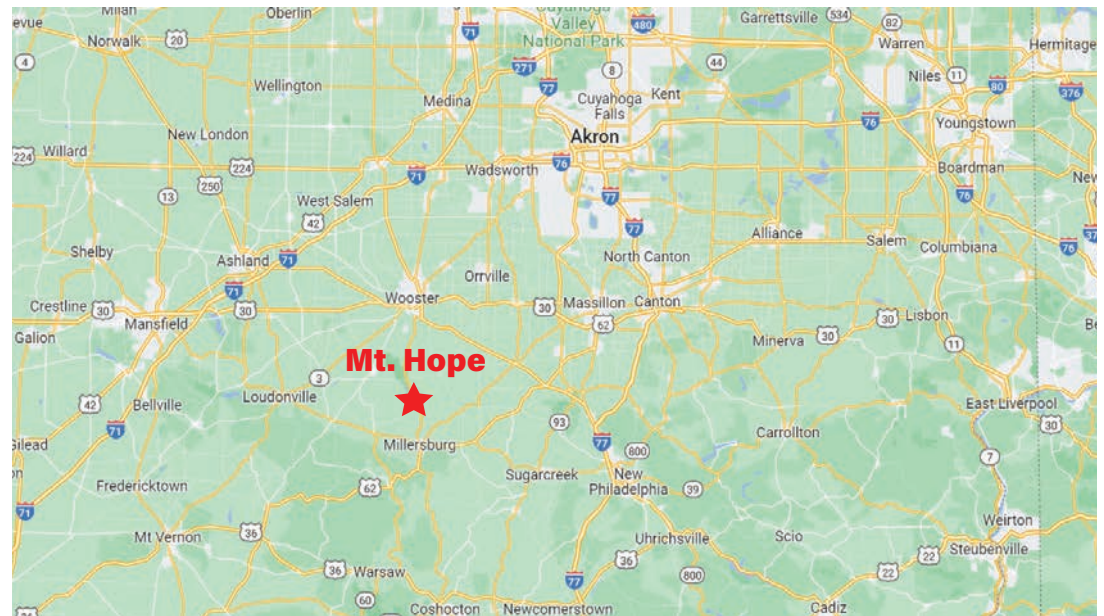
★ ★ ★ ★ ★

Heavy Equipment
Sawmill & Pallet Equipment
Woodworking - Metalworking
Industrial Equipment
Manufacturing Equipment
Rolling Stock

★ ★ ★ ★ ★

(330) 845-8485
www.airworksauktion.com

Specializing In Liquidations



Air Works Consignment Auction, Ltd.
 P.O.Box 242 Kidron, OH 44636
 330.845.8485 (Office)
 330.816.0006 (Fax)
 office@airworksauction.com
 AirWorksAuction.com

37th Annual Air Works Consignment Auction

AUCTION

Antique & Collectibles Division



Thurs Feb. 13th Through Sat Feb. 15th - 2 Rings/5 Rings Thurs
 Mt. Hope Auction Grounds - GPS Location: 8076 SR 241 Millersburg, OH 44654

Antique & Used Tools-Blacksmithing-Cast Iron Collection-Butchering-Book Collection-Gun Collections-Salesman Samples-Collectible Toys-Antiques-Collectibles-Primitives

ANTIQUES HIGHLIGHTS



Thursday, February 13 • 5 Rings Selling All Day

Thursday, February 13 - 8:30 A.M., Ring 2 - Toys, Miniatures

This session will feature approximately 500 offline toys featuring many iconic farm toys, miniatures, vintage child's toys and much more. At 2:00pm we will start with a one-family collection of Farm Toys, Miniatures, Implements, Pedal cars/ tractors and much more. Many are NIB!



The 37th Annual Air Works Auction

Thurs Feb. 13th Through Sat Feb. 15th - 2 Rings/5 Rings Thurs
Mt. Hope Auction Grounds - GPS Location: 8076 SR 241 Millersburg, OH 44654

Thursday, February 13 • 5 Rings Selling All Day

Thursday, February 13 - 8:30 A.M., Ring 2 - Miniatures/Salesman Samples



Thursday, February 13 • 5 Rings Selling All Day

Thursday, February 13 - 8:30 A.M., Ring 3 - Catalogued Antique Tools, Indian Artifacts, Collectibles, Blacksmith Tools

This session features approximately 1000 items, including a remarkable collection of cast iron cookware pieces from makers such as Griswold, Wagner, Erie, Favorite Piqua Ware, and Wapak, including several key pieces such as number 13's, Number 2's and several iconic pieces. The collection includes pieces ranging from #0 to #14 skillets, decorative cake molds, waffle irons, Dutch ovens, Scotch bowls, gem pans, and muffin pans. The woodworking section features planes, including premium examples like the Stanley No. 8C Type 16 (1933-41) a Stanley no. 1, and a No. 40 Scrub Plane (c.1910), plus an early plow plane with ivory inlaid arms. Vises are spanning from delicate jeweler's pieces to heavy-duty machinist vises from makers like Wilton and Stanley. The collection includes axes and hatchets, including broad axes (1840-1870), a Vaughn Super Steel double-bitted axe, and specialized hatchets from Hammond and Germantown plus Keen Kutter, Plumb, Norlund and more. Also includes a large selection of tractor seats and much more! Notable rare items include an antique Monta lawnmower (1923), a Lorrillards tin tag tobacco cutter, and a German-manufactured surgeon's cranial drill. This session also features measuring tools, miniatures, railroad equipment, woodworkers' aprons, toolboxes, and period-appropriate books and advertising materials. This session ends with nice one owner collection of approx 50 hard to find toys including 1/8 scale and a few custom pieces. This is a session one does not want to miss!



The 37th Annual Air Works Auction

Thurs Feb. 13th Through Sat Feb. 15th - 2 Rings/5 Rings Thurs
Mt. Hope Auction Grounds - GPS Location: 8076 SR 241 Millersburg, OH 44654

Friday, February 14 • 2 Sessions

Friday, February 16 - 8:30 A.M., Ring 2 - Antique Tools, Cast Iron, Blacksmithing

This session is packed full of Cast Iron and Blacksmithing of some of the most sought-after pieces you can imagine. Beginning with over 300 lots of quality cast iron pieces featuring iconic brands such as Erie, Griswold, Wapak, Wapak Indianhead, Favorite Pi-quaware, and more. You will find many different sizes from 1-20 on skillets, including a no. 20 Griswold, numerous no. 13 Griswolds, and a numerous no. 13 Dutch Ovens and a number 1 Griswold! Additionally, you will find countless Skillets, Waffle Irons, Cake Molds, Tobacco Cutters, Dutch Ovens, Griswold Heart Star Waffle Irons, No. 1 Skillets, Propane stoves, and so much more. Moving past the cast iron session, you will find the annual offering of blacksmithing. This session includes numerous Anvils, Swage Blocks, tongs, vises, post vises, hammers, and more—iconic brands such as Trenton, Hay Budden, Peter Wright, and others. Anvils weigh as much as 500 pounds and several handy sizes for any experience level. Also included are numerous hammers, tongs, and hardy tools to complement even the most experienced blacksmith. This is a yearly highlight session that commands a large crowd. Arrive early for a good seat!



The 37th Annual Air Works Auction

Thurs Feb. 13th Through Sat Feb. 15th - 2 Rings/5 Rings Thurs
Mt. Hope Auction Grounds - GPS Location: 8076 SR 241 Millersburg, OH 44654

Friday, February 14 • 2 Rings

Friday, February 16 - 8:30 A.M., Ring 3 - Antique Highlights, Blacksmithing, Pocket Knives, Pocket Watches, Catalogued W/Online Bidding

This session features a curated blend of antiques, steam whistles, antique tools, toys, pocket knives, and 50+ pocket watches. This session begins with a mix of sausage stuffers, railroad items, jeweler anvils, blacksmithing, goosewing axes, 75+ steam whistles, and more. You will find iconic items such as Spittoons, butter churns, anvils, blacksmith hammers, Advertising Signs and thermometers, and so much more. There will be a muzzleloader section as well that will sell ONSITE only. The session will then resume the online catalog featuring 150+ lots of pocket knives, including Case XX, Marbles, Kinfolks, Camillus, Leathermen, German-made, US-made, Remington, and several early Case XX Knives. The session wraps up with over 50 pocket watches, including Hamilton, Ball, Elgin, Waltham, Hampden, South Bend, and many other brands, with several jewels, 21 jewels, and Elinvar watches with popular models of railroad grade, 992B, 992E, 950B, and many others. This is a session you won't want to miss.



The 37th Annual Air Works Auction

Thurs Feb. 13th Through Sat Feb. 15th - 2 Rings/5 Rings Thurs
Mt. Hope Auction Grounds - GPS Location: 8076 SR 241 Millersburg, OH 44654

Friday, February 14

Friday, February 14 - 3:00 P.M., Ring 2 - Salesman Samples & Highlights



This is only a Partial List of the Highlights



The 37th Annual Air Works Auction

Thurs Feb. 13th Through Sat Feb. 15th - 2 Rings/5 Rings Thurs
Mt. Hope Auction Grounds - GPS Location: 8076 SR 241 Millersburg, OH 44654

Friday, February 14

Friday, February 14 - P.M After Catalogued Session, Ring 3 - Muzzleloader Collection



This muzzleloader session will include the following plus any that show during drop off days- 1858 Rem Brass Sheriff .44cal F.LLI Pietta Historical weapons, 1851 Navy .36 pepper-box F.LLI Pietta Historical weapons, 1851 Rob and Navy sheriff cl .44 F.LLI Pietta Historical weapons, Traditions Trapper 50 cal made in Spain Old Saybrook CT, Jukar 005752, Black Powder Flint Duck town TN .451 cal, Dikar Dikar Spain Black Powder .45 cal, Black Powder .44cal F.LLI Pietta, Jukar Spain Black Powder .45 cal, Connecticut Valley Arms, Jukar Saw warrant .45 cal, Thompson Center Arms .54cal Percgale, Hawken .50 cal Black Powder, Connecticut Valley Arms .50 CAL, Made in Italy .50cal, Thompson Center Arms .50 cal, Made in Spain .45cal, Connecticut Valley Arms B.B.Best .50cal, Connecticut Valley Arms .50 cal, Connecticut Valley Arms .45 cal, Traditions Deer Hunter .50cal and more!

Saturday, February 15

Saturday, February 15 - 8:30 A.M., Ring 3 - Collectible Toys

The Saturday toy session is always a hit! This picture is a small sample of the over 400 lots of farm toys that will be offered onsite only during the auction and will feature many more items as they come in! This impressive farm equipment session features several 1/8 scale International Harvester models, including the IHC Famous Engine, a limited edition 2019 PA Farm Show IH 1066 (one of only 250 made), and a just-released IH Hydro 100 signed by Joe Ertl. Also included are two more Joe Ertl pieces: an IH 1066 Wide Front with white decal signature and an IH 966 Wide Front commemorating 100 years of Farmall. The John Deere lineup is extensive, featuring a 45 Combine Prestige Series, various Precision Series models including the 70 Diesel and B models, along with special FFA editions like the 2009 OH S80 and 2000 BN. Additional John Deere pieces include several GP models (one with umbrella), various cultivator-equipped units (M and LA models), crawlers, and implements including the R with 4 Bottom Planter and 2440 with backhoe. The collection also features steam-powered equipment including Case Steam Engines, a Case Thresher, and the historic Waterloo Boy. Rounding out the collection are several Farmall pieces including an F20 with wagon and 560 with IH Baler, an International 1586 with 4 Bottom Plow, a McCormick 55W Hay Baler with engine, New Holland Square Baler, and New Holland Tin Collector Cards. Again, this is only a partial listing and this session will be packed as always!



Saturday, February 15

Saturday, February 15 - 8:30 A.M., Ring 2 - Miscellaneous Uncatalogued Antiques



Mt. Hope SHOWCASE

Mt. Hope Event Center

Adjacent to the Auction Grounds

FEBRUARY 2025

Showcase Hours

Thursday February 13, 10AM - 7PM

Friday February 14, 7AM - 7PM

Saturday February 15, 7AM - 12 NOON

For information, call 330.473.7046

MtHopeShowcase.com

Accessa
Agri Door
AG TruCut
Air Flow Ventilation
Airworks, Ltd.
AISECO
A + M Dry Kiln
A + M Gutter Guard
Anabaptist Financial
Apple Outdoor Supply
Arthur Distribution Co.
Atlas Horse Power
AW Machinery
Bad Dog Tools
BDH Belts
Beechy Buggy Shop
Bentwood Solutions
Black and White Leasing
Blue Iron Metal Works
Blu Flame Heaters LLC
Bowman Belts
Buckeye Hardware Dist.
Busy Beaver Publications
C & A Design

Calmoutier Dry Kiln
Cardinal Hollow Repair
Carriage Machine
Century Components
Charles GG Schmidt
Charm Engine
Charm Monument
Classical Construction
Competitive Commodities
Conestoga Woodworking Supply
Consolidated Solutions
Countryside Milwaukee Tools
Creative Power Solutions
Criswell Concrete
Culpeper Wood
Custom 3D
Custom Cast
Custom Wood Products
CutCo
Daystar Systems
D & D Sawmill Service
Die Botschaft
Dimensions In Tooling
Dirt Digger

Distributor Service Inc (DSI)
DJ Manufacturing
DJM Sales
DJS Welding
DM Weld Shop
Double R Sharpening
DryCo Lumber
Duralast
DW Bands
Dyna Cut Shears
Dyna Products
Eagle Coaching
East Coast Drywall
E + B Enterprises
Ed's Outdoor Store
ENS Supply
Envirosol
E+Z Boardwalk
EZ Magazine
Farmer's Equipment Repair
Finishworks
Fire Pro LLC
Flack Hill Machine
Formwright
Frank Miller Lumber Co
Fraud Aware
Galaxy Circuits
Georgetown Hydraulics
Georgetown Sales
Glass Specialties
Greater Regional Tech
Green Fast Cure
Green Tree Machine
Hamilton Tool Supply
Hentzen Coatings
Hermance Machine
Hershberger Mfg
Hershey Machine
Highland Automation
Hiland Wood Products
Hill Climbing Mfg
Hilltop Welding
Holmes Fire + Safety
Holmes Lumber
Holmes Power Equipment
Holmes Printing Solutions
Hometown Outdoor
Hoover Pump Works
Industrial Parts and Service
Inkscape Print & Promo
Interpack Systems

2025 VENDORS

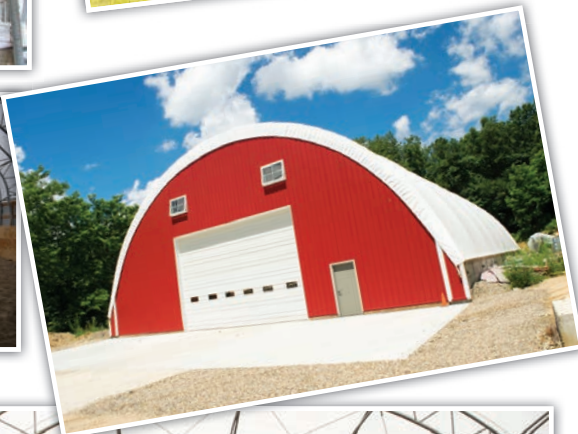
Iron Bull MFG
Ironstone Hammocks
JadaPay
JAM Industrial Supply
JA Planes & Trains
JC Manufacturing
JD Coatings
Jonas Miller
Jonathan Girod
JR Heating
JS Welding
KC Innovations
Koble Systems
Lancaster Lanterns
Lancaster Showcase
Lapp Millwright
Leppo Rents
Lewis and Hockenberry Inc
L J Woodworking
Mann Fluid Power
Mayko Products
Maysville Harness Shop
Metalworks
Midwest Fire & Safety
Midwest Machinery
Miller Sales
Miller-Tech Energy
Mt. Eaton Engine Shop
New Bedford Feed Supply
New Fab Enterprises
Open Hands
Oregon Ag LLC
Outdoor Hardware Supply
Paint Valley Equipment
Paint Valley Steel Wheels
PCBE
Pilgrim Books
Pioneer Carriage
Power Systems
Precision Power Equipment
Progressive Shoes
Quality Custom Metal
Quality Plastics
Quality Sips
Rapid Start
Reiff Metal Fab
Renew Plastics
Rintele
RS Sheet Metal
RT Machine
Salt - C.A.M.

Sawmill Automation
Scanhugger
Scenic View Engine
Schmucker's Country Store
Schwartz Welding
SE Drive Shafts
Showcase Equipment
ShurPly
SS Snow Stoppers
Sterling Distribution
Stoll Brothers
Stoll Steel Building
Stoll Metalworks
Sunlite Enterprises
Sunset Spreader
Superior Edge
Superior Mat
Symbiz
Tangent Square
Tech Bond
The Budget
The Standard Bred Journal
Think Ink
Timber Buddy
Tin Roof Studios
TNT Welding
Top Choice Roofing
Trade Express
Trail Farm Supply
Troyer Machine
Troyer Wholesale
Turnings Direct
United Fencing
Unlimited Products of L
Weaver Metalworking
Weaver's Magneto Repair
Weaver Tool Gear
Wellspring Components
Whitetail Properties
Williams Toyota
Woodwright
Workhorse Sawhorses
Wurth Baer
Yoder Feeders
Yoder Hydraulics
Yoder Lumber
Yoder Produce
Yoder Service & Supply
Yoder Sharpening
Yoder's Nutrition
Young Living

Have You Considered A Fabric Building?



- Galvanized Steel Structure
- Natural Light
- Excellent Ventilation
- Possible Tax Reduction
- Resale Value



- 24' to 100' wide, any length
- Ventilation options
- End Kits
- Replacement covers for all brands
- Call or write for a free brochure!



Skylight Fabric Structures

30697 Colony Ave. - New Cambria MO 63558
833-482-8862 | 660-486-3250



6161 Mt. Hope Rd Apple Creek, OH 44606
330.778.0020 - AWMachineryLLC.com

Visit Our Booth at the 2025 MT. HOPE SHOWCASE

- Pre-Order Your Machine & Save with Early Bird Deals
- Meet with our AW Machinery Team or discuss your Application with Factory Reps
- Experience a Personalized Live Demo with your Machine of Interest
- Free Gifts with every Purchase
- Free Tickets for Drawings/Door Prizes

Live Demos/Factory Reps



SW 200
Wide Belt Planer/Sander



RM100
Minimoulder



STO-525M
Heavy Duty Shaper



AIRSTREAM
Orbital Sander

FEBRUARY 2025

Mt. Hope SHOWCASE

Mt. Hope Event Center
Adjacent to the Auction Grounds

Showcase Hours
Thursday February 13, 10AM - 7PM
Friday February 14, 7AM - 7PM
Saturday February 15, 7AM - 12 NOON

DON'T MISS THE 37TH ANNUAL AIR WORKS AUCTION/MT. HOPE SHOWCASE

VISIT OUR SHOWROOM

Pre-order a booth machine for an additional discount

- (1) Extra Discounts on Booth Machines
- (2) Free Machine Shipping to Show
- (3) FREE Tickets for Drawings/Door-Prizes

Save Big!

6161 Mt. Hope Rd
 Apple Creek, OH 44606
 Hours 7AM - 4PM Monday - Friday
 8AM - 12 Noon Saturday



SHOW DISCOUNTS

Be sure to stop by our booth at the Showcase and pick up your FREE Machinery Calendar!



MTC Flex Series
Vertical CNC Router



SHOW DISCOUNTS

NEW
Machines on Display!

LM116
Easy Lock Miter
Super Fast Quick Change Spindle!



Power Options
230V/460V
Hydraulic
Lineshaft

Discounts not available on Circle T machines.



Flexy P
Edgebander



AW INDUSTRIAL WOODWORKING EQUIPMENT
Machinery

6161 Mt. Hope Rd
 Apple Creek, OH 44606
 330.778.0020
 AWMachineryLLC.com

Pre-Order to pick up - February 13, 14, 15 2025 | Mt. Hope, OH



Power Tools & Fasteners For The Way You Work...



Nails
 Framing Nails
 Sheathing Nails
 Roofing Nails
 Siding Nails
 Finish Nails
 Pallet Nails
 Pole Barn
 Sinks

Staples
 Sheathing
 Tacker Staples
 Finish Staples



AIR WORKS Ltd.

The Power Tool Connection

10680 Dover Road
Apple Creek, OH 44606
(Ph) 330.698.0388 - (Fax) 330.698.3088
sales@airworksltd.com

Visit the Air Works Store

February 10th - 15th
Find great deals on Closeouts and Bargain Tables
Pick up your order and save

Air Works Auction Pre-Order

Place your order today to pick up when you come to the Air Works Auction
Save on shipping - Plus receive a Bonus Gift

Carpenter Hand Tools and Accessories

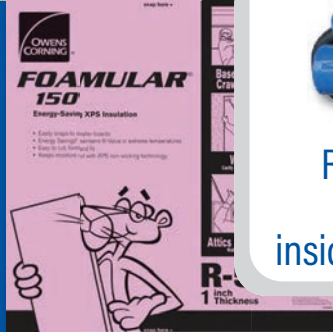


**ENTER TO WIN
THIS COMPRESSOR**
At the Mt. Hope Showcase
Feb 13, 14, 15



Register location will be
at the Air Works booth
inside the main Expo entrance

Concrete
Wire Mesh
Foam Board
Rebar
Plastic
Calcium



Tools
Trowels
Buggys
Skreeds
Tampers
Mixers
Scaffolds
Mason Tools



Live and Online

Huge Gun Auction
Friday February 14, 2025

(During Airworks Auction)

Mt. Hope Auction Grounds:

8076 SR 241 Millersburg OH 44654

Gun Auction 1 Starting 9:00 AM - 280 Guns
 Gun Auction 2 Following Gun Auction 1 – 150 Guns



Nelson Weaver 330-763-4855 – Daniel Weaver 330-231-8865
 David Miller 330-473-3430



Anabaptist
 Foundation

Caring for the Gift, the Giver, and the Recipient Charities

55 Whisper Creek Drive, Lewisburg, PA 17837
 phone: 1-800-653-9817 | fax: 1-866-230-6253
 email: info@afweb.org | afweb.org

A-M GUTTER GUARD™
 The Difference is in the DESIGN



Original / Manufactured by: A-M Seamless Gutters, LLC

- Heavy Gauge .018 - 100% Aluminum
- Handles Downpours
- We Have **GREAT** Wholesale Prices!

Call: 440-321-5336

Talk to us about Dealer Opportunities

Call Today to Have it Shipped to Your Door!

EASY TO INSTALL IN NEW OR EXISTING GUTTERS

Had it with sanding dust?
Bring in a pro.

- Sanding Tables
- Sanding Booths
- Inspection Lighting

SAND PRO®



SANDMAN Products

Sanding Tables, Sanding Booths, & Inspection Lighting
 Ph: 800-265-2008 • info@sandmanproducts.com
 www.sandmanproducts.com



*The finest in
 North American
 Hardwoods*

Crist, Allen & Aden - Sales

See us at Booths 301-302
 at the Mt. Hope Showcase

9990 Hackett Rd. Apple Creek, OH 44606
 330.465.9054 (phone) • 330.778.2499 (fax)

Fine Hardwoods | Exceptional Customer Service

Ed's Outdoor Store

Stop by our Booth at the Mt Hope Showcase

32040 Allison Road
St. Ignatius, MT 59865

FREE CATALOG
406-745-5115

Fax 406-745-6116 "Ich Kann Deutsch" **CLOSED SUNDAYS**

VISA MasterCard

12 + Food Vendors Located Outdoors Throughout the Venue

8050 SR 241
Millersburg OH 44654
(in Mt. Hope, OH)

Sleep INN
BY CHOICE HOTELS

330.294.9977

Clean, Spacious Room w/Complimentary Wi-Fi

Refreshing Indoor Swimming Pool

State-of-the-Art Fitness Room

Coin Laundry inside hotel

Our Standard Room

SR241

SR241

Event Center

Auction Grounds

CR77

Mt. Hope

Adjoining the Auction & Event Center Grounds

The perfect stay when attending the Air Works Auction & Mt. Hope Showcase!

Visit Our Booth

at the Airworks Auction

FOR 5% OFF PROMO ITEMS

Your source for quality print and promotional products at a fair price.

MAIN OFFICE 5991 CR 77, Millersburg, OH
KIDRON 5000 Kidron Road, Apple Creek, OH
PHONE. 330.893.0160 FAX. 330.893.2589
WWW.INKSCAPEPRINT.NET

GOT BATTERIES TO CHARGE?

USE THE

CATAMOUNT

CHARGE THEM BATTERIES!



**DeWalt,
Milwaukee
Makita**



THE CATAMOUNT CHARGER

for DeWalt, Milwaukee and Makita Batteries

FEATURING: Battery-to-Charger Communication for Safety

Efficiently DC Powered 12 Volt to 60 Volt input

- Works with:**
- 12 Volt Battery
 - 24 Volt Battery
 - 36 Volt Battery
 - 48 Volt Battery
 - Solar Panel (up to 50 volts)

Uses up to
20% Less energy than
an inverter with
AC Chargers

NEED THE SUN'S POWER?



Pre-Wired Solar Kits

- KIT-1** Charges 3-5 Tool Batteries Per Day
- KIT-2** Charges 8-10 Tool Batteries Per Day
- KIT-3** Charges 12-15 Tool Batteries Per Day
- KIT-4** Charges 8 Tool Batteries Per Day Plus Runs a 15 cu.ft. Freezer



Our first 1000 DeWalt Catamounts were gone in 1 1/2 weeks. Contact us for pre-ordering details, availability updates, and Lion & Cub trade-in deals.



Call John at 270-465-0821

Fax: 270-465-0154

New Address
898 Merrimac Rd, Bradfordsville, KY 40009

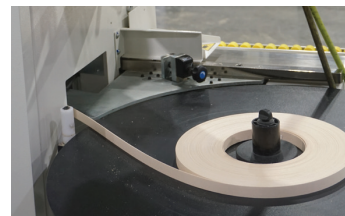
Be Sure To Stop By The Free Literature Tables At The Mt. Hope Showcase

NEED HELP WITH YOUR HIGH PRODUCTION ORDERS? WE'VE GOT YOU COVERED!



- **CNC Routing**
- **Edgebanding**
- **Beam Sawing**

Let our state-of-the-art machines eliminate bottlenecks in your operation. Take advantage of our short lead times!



CREATIVE
WOODWORKS

128 Smokey Lane Road SW
Sugar creek OH 44681

330.897.2233 (Ph) • 216.359.1952 (Fax)
sales@creativewoodworks.net
CreativeWoodworks.net

**HEAVY DUTY
PULLEY CLOTHESLINES**

8", 12", 16" poly or aluminum pulleys
Powder coated finish & zinc-plated metal components

Spring lock mechanism to lock pulley
Cable guides to prevent derailing
Galvanized elevator pole



 **SKYLINE
ENTERPRISES**


For more information, visit our website:
skylineclotheslines.com

330-403-3010
skylinenter@gmail.com

MADE IN THE USA • DELIVERED TO YOUR DOOR

5452 Township Rd 377 | Millersburg, OH 44654

AIR WORKS
CONSIGNMENT AUCTION LTD.



**ONLINE-ONLY
CLEANUP AUCTION**
Thursday, March 25
Lots Start Closing 10:00 A.M.
Selling Leftover Items from the
February Auction

AirWorksAuction.com

LOADOUT INFORMATION

We provide FREE loading and have staff with forklifts and heavy equipment onsite to get your items loaded for you at no cost in the allotted timeframe.

The lot is closed on Sunday. It is our goal that your auction experience is a pleasant one. Your understanding and compliance with the load out terms will help accomplish this goal! The buyer is responsible for picking up the purchased items during allotted removal dates and times. If you send a trucker to pick up your items, he must have a paid receipt or will not be loaded. Buyer's will need to have a paid receipt to enter auction area and before loading.

Load out terms: Free load out assistance will be provided on the auction grounds, the dates with each ring or department as listed below.

- Send a copy of your paid receipt with your hauler.
- Heavy Equipment, Sawmill Equipment and Power units Loadout dates February 17th thru 28th, (two weeks)
- Woodworking & Metalworking Equipment, and all other Industrial items. Loadout dates February 17th thru 21st, (one week)
- Small tools, Antiques and Book Auction area items need to be removed by last day of sale Saturday Feb. 15th.
- Items in all other areas need to be removed by Wednesday Feb. 19th.
- Note; Online purchases from the antique and collectible rings will be sent to a third party shipper on same day that the item was sold, the third party shipper will contact you (the buyer) for shipping arrangements.
- After the above dates it's by appointment only and at a fee of \$100 to \$500 depending on load. To schedule an appointment for loadout after the above dates. Call Loadout Manager Emanuel Miller 330-749-7259.
- Any items or Equipment left on the lot after February 28th 2025 will become property of the Air Works Auction. NOTE: The Auction reserves the right to sell or dispose of items left on the premises past the pick-up dates listed above.

FEBRUARY 13-14-15 2025

THE 37TH ANNUAL AIR WORKS CONSIGNMENT AUCTION!

Mt. Hope Auction Grounds, Mt. Hope, Ohio

(GPS) 8076 SR 241, Millersburg, OH 44654

Heavy Equipment - Rolling Stock
Sawmill, Logging & Pallet Equipment
Woodworking Machinery - Metalworking Machinery
Power Units & Gensets - Antique Tools & Collectibles

Mt. Hope
SHOWCASE

Make plans to attend the 2025
Mt. Hope Showcase held
alongside the auction!

Thursday, Feb. 13th - Friday, Feb. 14th - Saturday, Feb. 15th, 2025



AIR WORKS

CONSIGNMENT AUCTION LTD.



Air Works Consignment Auction, Ltd.

PO Box 242

Kidron OH 44636

330.845.8485

**SEE HOTEL
INFORMATION INSIDE**

*The 37th
annual
Air Works
Consignment
Auction!*

AIR WORKS

CONSIGNMENT AUCTION LTD.



*The Complete
AIR WORKS AUCTION!*

**Thursday, Feb. 13th 2025 at 8:30 AM
Friday, Feb. 14th 2025 at 8:30 AM
Saturday, Feb. 15th 2025 at 8:30 AM**

*Air Works
Auction* **330-845-8485**

**More Auction
Information &
Online Bidding**



SCAN ME